



DETAILS & MATERIALS

WOOD FINISHES & LAMINATES

OAK



NATURAL NOO

Laminate Match
Formica 7152-58 Northern Oak



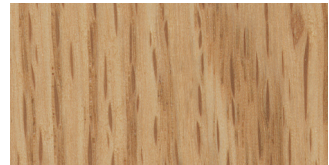
SOLAR SOO

Laminate Match
Formica 346-58 Natural Oak



LIGHT LOO

Customer Choice Laminate



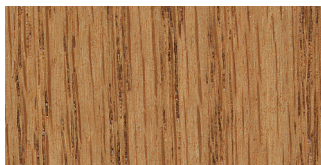
AUTUMN AOO

Laminate Match
Wilsonart 7816-60 Solar Oak



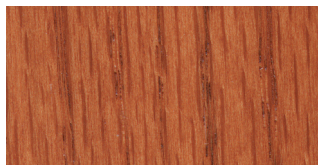
GREY GOO

Customer Choice Laminate



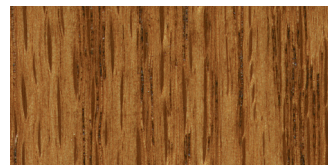
PECAN POO

Laminate Match
Pionite W0581 Wisconsin Oak



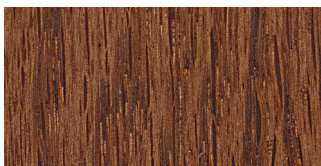
MEDIUM CHERRY MCO

Laminate Match
Nevamar WC5581N Blossom



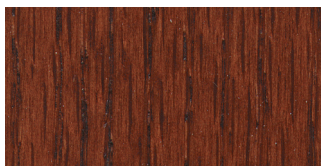
MEDIUM WALNUT MWO

Laminate Match
Wilsonart 7885K-78 English Oak



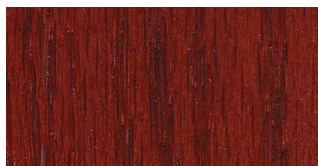
ENGLISH EOO

Laminate Match
Wilsonart 7957K-78 Zanzibar



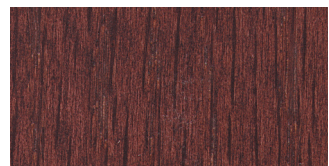
WINDSOR MAHOGANY WMO

Laminate Match
Formica 7583-58 Victorian



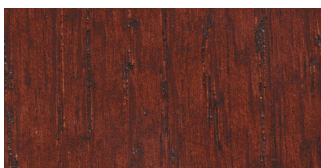
CHERRY CHO

Customer Choice Laminate



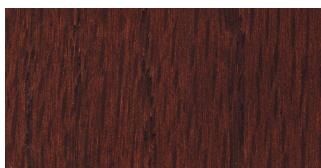
CORDOVAN COO

Customer Choice Laminate



MAHOGANY MAO

Laminate Match
Wilsonart 7040K-78 Figured



IMITATION WALNUT IWO

Laminate Match
Formica 6209-43 Prestige Walnut

STANDARD FINISH

Our standard wood finishes are represented. These printed samples closely represent our standard colors. Please contact Customer Service for actual wood finish samples.

CUSTOM FINISHES

We will make every effort to accurately match your custom finish sample. Please contact Customer Service for a custom finish match as there may be additional manufacturing charges to be added to the standard development fee of \$100 net per match. Due to limitations of some wood species, we reserve the right to decline requests. Wood owes its inherent beauty to variations in color, graining, and texture

in its natural state. In our finishing process, we attempt to accent this beauty rather than subdue it. Consequently, the chairs you receive may not be a perfect color match to a sample. Similarly, there may be minor variations in color from one chair to the next even though they are finished at the same time.

HIGH PRESSURE LAMINATES (HPL'S)

Jasper Chair's table collections feature HPL top options. Reference the swatches for a complementary HPL match. For critical or specific color representation, contact Customer Service for an actual HPL sample.

MAPLE



NATURAL NMM

Laminate Match
Wilsonart 7909-60 Fusion Maple



SPICE SMM

Laminate Match
Formica 7284-58 Figured Annigre



MEDIUM CHERRY MCM

Laminate Match
Formica 5904-43 Wild Cherry



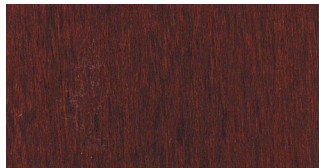
MEDIUM WALNUT MWM

Customer Choice Laminate



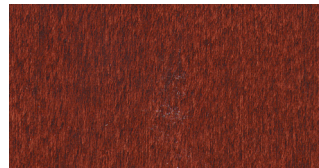
NUTMEG NUM

Laminate Match
Pionite WC331-H Victorian Cherry



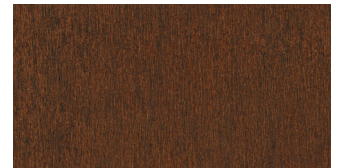
MAHOGANY MAM

Laminate Match
Wilsonart 7122K-07 Empire



CHERRY CHM

Customer Choice Laminate



IMITATION WALNUT IWM

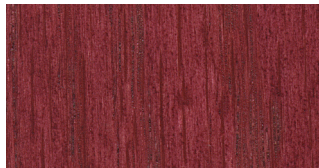
Laminate Match
Wilsonart 7942K-07 Columbian

COLOR

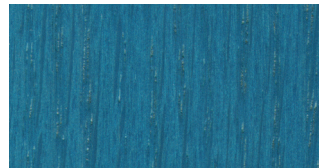
(ADD \$20 LIST PER ITEM)



LEMON LEO



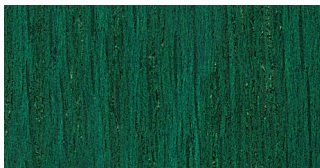
GRAPE GRO



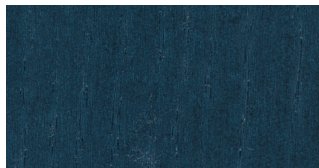
SKY BLUE SBO



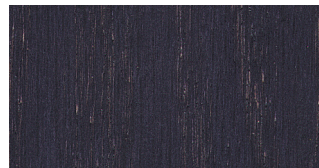
FLAME RED FRO



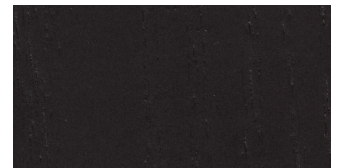
EMERALD EMO



DARK BLUE DBO



VIOLET VIO



EBONY EBO

FABRIC PROGRAM

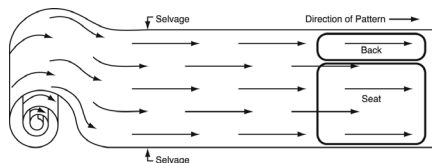
Jasper Chair's Fabric Program offers a selection of fabrics in a wide array of patterns and colors to accommodate a variety of applications. From durable fabrics to withstand the rigors of schools and universities, to easy-to-clean fabrics for restaurant and hospitality use, to protective upholsteries suitable for healthcare, Jasper Chair will have upholstery to fit the need.

A variety of fabrics are shown on Jasper Chair's swatch cards. Larger memo samples are available by contacting the fabric manufacturer direct.

All product includes the cost of applied fabric using Jasper Chair's Fabric Program and grade structure. These fabrics are classified or priced in grades ranging from grade 200 (lowest) to grade 700 (highest). If two graded fabrics are to be applied to the same frame, pricing will be based on the higher of the two grades.

Published yardage is based on a solid 54" wide fabric. In some cases, the pattern or repeat will require additional yardage. Please contact Customer Service to help estimate yardage requirements, toll free: 866-891-8289.

Unless the customer indicates, all fabrics will be customarily applied in a railroad manner (or off the roll in a horizontal fashion) as shown.



If the fabric should be applied in a different manner or up the roll, please indicate on your purchase order. Please be aware that additional costs and additional yardage may arise from applying the fabric other than the customary direction.

Cut yardage is available for purchase. Should a customer require to purchase cut yardage, refer to the following table for pricing.

Grade 200, \$77 per yard list
Grade 300, \$113 per yard list
Grade 400, \$147 per yard list
Grade 500, \$186 per yard list
Grade 600, \$225 per yard list
Grade 700, \$266 per yard list

Jasper Chair partners with multiple upholstery vendors to offer graded-in fabrics for ordering ease. These are listed on the following pages. For more information and to order memo samples please contact vendors direct.

ARC COM
arc-com.com
800-223-5466

CF STINSON
cfstinson.com
800-841-6279

DOUGLAS
douglassfabrics.com
800-950-3684

MAYER
mayerfabrics.com
800-428-4415

BURCH
birchfabrics.com
800-841-8111

CAMIRA
camirafabrics.com
616-288-0655

MAHARAM
maharam.com
800-645-3943

MOMENTUM
themomgroup.com
800-366-6839

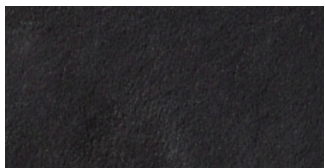
FIRE RETARDANCY

All Jasper Chair products are manufactured to comply with California TB 117 as a minimum standard. Compliance with more stringent codes requires special manufacturing considerations and possible up-charges.

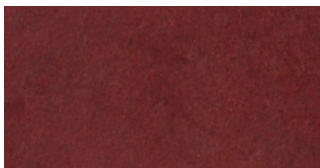
For California TB 133 we use either barrier material between the fire retardant fabric and foam cushioning or a fire retardant fabric and foam in order to comply with California TB 133. Some product designs and fabrics cannot be combined to comply with California TB 133. Because of this, we reserve the right to reject any request for a fabric, including C.O.M., or product style that may compromise the integrity or safety of a product specified to comply with California TB 133. Please contact Customer Service for pricing and availability to comply with California TB 133.

STANDARD LEATHER

The leathers shown are thicker material selected for woven backrests; they are not ideal for standard upholstery application.



BLACK BL



BURGUNDY BU



BROWN BR



TAN TA

CUSTOMER'S OWN MATERIAL

Jasper Chair accommodates Customer's Own Material (COM) requests. COM orders must meet quantity requirements for adequate yardage as well as performance requirements to avoid wear and defects and satisfy aesthetic expectations on Jasper Chair products. When selecting a fabric please be aware that some fabrics may not tailor well due to their characteristics. Jasper Chair cannot assume responsibility for the tailoring quality of some fabrics or for the receipt of defective materials.

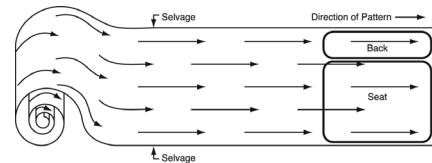
When specifying COM, refer to Grade 200/COM pricing grades.

All COM orders must be accompanied by Jasper Chair's COM form to expedite the order, indicating fabric details and application instruction. All COM orders should be shipped to:

Jasper Chair
Receiving Department
534 East 8th Street
Jasper, Indiana 47547

Yardage published is based on a solid 54" wide fabric. In some cases, the COM pattern or textile width will require additional yardage. Please contact our Customer Service to help estimate yardage requirements, toll free: 866-891-8289.

Unless otherwise noted, all fabrics will be applied in a railroad manner (or off the roll in a horizontal fashion) as shown. It is very important for the customer to indicate upholstery preferences on the COM form to achieve the desired look when submitting a COM order. Please be aware that additional costs and additional yardage may arise from applying the fabric other than the customary direction.



Listed yardage requirements are based on 54" wide fabric. For fabrics less than 54" wide, or those requiring matched upholstery such as large patterns, prints, stripes, etc., additional yardage will be required based on style and quantity ordered. The below chart is a general guide to estimating yardage:

Fabric width	Plain	Under 7" repeat	7"-13" repeat	14"-21" repeat	22"-27" repeat	27"+ repeat
54"	0	15%	20%	25%	30%	40%
51"-53"	10%	25%	30%	35%	40%	50%
48"-50"	15%	30%	35%	40%	45%	55%
45"-47"	30%	45%	50%	55%	60%	70%
36"-44"	50%	65%	70%	75%	80%	90%

COM FORM

All COM orders must be accompanied by Jasper Chair's COM form to expedite the order, indicating fabric details and application instruction. All COM orders ship to:

Jasper Chair
Receiving Department
534 East 8th Street
Jasper, Indiana 47547

Customer Name

Purchase Order Number

Address

City, State, Zip

Fabric Manufacturer

Fabric Pattern Name / Color Name

Pattern Instructions (indicate which direction the fabric is to be applied). Circle one:



Off the roll, railroaded



Up the roll

Comments / Notes

FABRIC PROGRAM

Fabrics listed may have been discontinued or price changed since publishing.

BURCH

Abstract.....	400	Encore.....	400	Nautica.....	400	Stamp.....	300	Index.....	400
Access.....	400	Entwine.....	300	Nimbus.....	500	Stanza.....	300	Jive.....	400
Adorn.....	300	Escape.....	300	Nirvana.....	300	Stencil.....	500	Journal.....	400
Alias.....	400	Essay.....	400	Nonstop.....	400	Stride.....	300	Kosta.....	400
Align.....	300	Essence.....	400	Occasion.....	300	Structure.....	300	Link.....	400
Amenity.....	400	Evolve.....	300	Optic.....	500	Study.....	400	Memoir.....	400
Amplify.....	500	Excursion.....	400	Opus.....	400	Suite.....	400	Odyssey.....	300
Analog.....	400	Exhibit.....	500	Orbit.....	300	Summit.....	400	Parker.....	300
Annex.....	400	Fast Track.....	300	Origami.....	500	Surge.....	300	Patina.....	400
Anthem.....	400	Feature.....	400	Outline.....	400	Surplus.....	500	Salinger.....	400
Apex.....	400	Felt.....	400	Ozone.....	300	Switchback.....	500	Script.....	400
Applause.....	300	Fiction.....	400	Palette.....	400	Syllabus.....	400	Tech.....	400
Badge.....	300	Filter.....	400	Parallel.....	300	Sync.....	400	Tolsory.....	400
Barcode.....	400	Firewall.....	400	Passage.....	400	Tabloid.....	400	Twain.....	400
Basis.....	200	First Class.....	400	Pathway.....	400	Tagline.....	400	Verve.....	300
Beeline.....	300	Flannel.....	400	Peace.....	300	Tangle.....	300	Wilde.....	400
Bespoke.....	500	Fleece.....	400	Peak.....	400	Tempo.....	300		
Beta.....	400	Flint.....	200	Pigment.....	400	Tether.....	300	VINYL	
Blade.....	300	Flora.....	300	Piñata.....	500	Theory.....	200	Accord.....	300
Block Party.....	300	Focal Point.....	300	Pindot.....	300	Thrive.....	300	Alchemy.....	300
Bloom.....	500	Folio.....	400	Plaza.....	400	Tint.....	400	All American.....	200
Blur.....	500	Formation.....	200	Pleat.....	400	Toggle.....	400	Allante.....	200
Boutique.....	400	Freeze Fram.....	400	Plush.....	400	Tower.....	400	Allante Touch.....	300
Box Office.....	300	Frenzy.....	300	Portfolio.....	400	Trek.....	400	Allegro.....	200
Branch Out.....	300	Fusion.....	400	Portrait.....	400	Triad.....	300	Alloy.....	300
Breeze.....	300	Generation.....	300	Prestige.....	400	Trilogy.....	400	Allure.....	300
Brink.....	400	Glamour.....	400	Principle.....	200	Tumble.....	300	Artic.....	300
Brush Stroke.....	400	Graph.....	400	Profile.....	200	Turnaround.....	300	Bandwidth.....	300
Bungalow.....	300	Grove.....	300	Proof.....	300	Tweed.....	400	Berwick Tweed.....	300
Buzzword.....	300	Guru.....	300	Propel.....	500	Upstream.....	500	Bondi.....	200
Candid.....	400	Headline.....	300	Prototype.....	400	Uptown.....	400	Bottega.....	300
Canteen.....	500	Hearth.....	300	Puzzle.....	300	Utopia.....	500	Bourbon Street.....	300
Caption.....	300	Homestead.....	400	Quadrant.....	300	Valet.....	400	Bramble.....	300
Carnival.....	300	Hue.....	400	Quantum.....	500	Velour.....	400	Bronte.....	200
Chalet.....	300	Hybrid.....	300	Quest.....	300	Verge.....	400	Burkshire.....	300
Chime.....	300	Ignite.....	500	Radiant.....	400	Viewpoint.....	400	Canyon.....	200
Chord.....	300	Imperial.....	400	Ratio.....	400	Villa.....	300	Carrara.....	300
Chorus.....	400	Infinity.....	400	Reed.....	500	Vine.....	300	Casablanca.....	300
Chroma.....	400	Insignia.....	400	Regis.....	400	Virtual.....	400	Celebration.....	400
Chronicle.....	400	Ion.....	400	Reserve.....	400	Voyage.....	300	Centerpoint.....	500
Circa.....	300	Jamboree.....	300	Retreat.....	300	Waldorf.....	400	Chambray.....	300
Cityscape.....	500	Jitterbug.....	400	Ricochet.....	400	Watercolor.....	500	Chamea II.....	300
Column.....	300	Junction.....	400	Riddle.....	500	Windsor.....	400	Classic.....	300
Connection.....	400	Key.....	300	Rise.....	300	Woolen.....	500	Clique.....	300
Cottage.....	400	Lattice.....	300	Roam.....	300	Zest.....	300	Clutch.....	400
Course.....	400	Launch.....	300	Roundabout.....	400	Zoom.....	400	Colorguard.....	300
Cove.....	400	Limelight.....	300	Runway.....	500			Connect.....	200
Crisscross.....	500	Linen.....	400	Rush hour.....	400	POLYURETHANE		Contempora.....	200
Crystal Ball.....	400	Livewire.....	300	Savy.....	300	Aura.....	400	Cornerstone.....	300
Curio.....	500	Lyric.....	300	Scale.....	400	Ballistic.....	400	Crosshatch.....	300
Cutting Edge.....	300	Mandalay.....	500	Scout.....	300	Baron.....	400	Dimension (Nassimi).....	400
Dapper.....	300	Meander.....	500	Scramble.....	300	Beckett.....	400	Disco.....	300
Davenport.....	400	Megabyte.....	400	Segment.....	300	Capote.....	400	Ditto.....	400
Decade.....	300	Melody.....	400	Shibori.....	500	Clarke.....	400	Dolphin.....	200
Degree.....	400	Method.....	200	Shuffle.....	400	Cork.....	400	Enchanted.....	300
Demo.....	400	Metric.....	200	Sidestep.....	500	Element.....	400	Endurance.....	300
Digital.....	400	Microchip.....	400	Social.....	300	Elite.....	300	English Pub.....	300
Draft.....	300	Milano.....	400	Sonic.....	300	Equator.....	400	Engrave.....	400
Drama.....	300	Milestone.....	300	Spellbound.....	400	Fable.....	400	Espirt.....	200
Drift.....	300	Mission.....	300	Spotlight.....	300	Flicker.....	400	Expressions.....	300
Edit.....	300	Mixtape.....	400	Sprint.....	300	Footnote.....	400	Flare.....	400
Elevate.....	500	Motley.....	600	Sprout.....	300	Hemingway.....	400	Focus.....	400
Embellish.....	300	Motto.....	400	Stage.....	300	Huxley.....	400	Fortress.....	200

BURCH, CONTINUED

Foundation.....	200	Rivet.....	300
Full Circle.....	500	Rogue.....	200
Genesis.....	200	Rogue II.....	300
Gilded.....	300	San Remo.....	300
Glaze.....	300	Savanna.....	200
Grand Sierra.....	300	Seduction.....	300
Grand Vista.....	200	Sequins.....	300
Guardian.....	300	Silvertex.....	300
Guideline.....	300	Soho.....	200
Heidi.....	200	Solitaire.....	300
Heidi Soft.....	200	Spirit Millennium.....	300
Heritage (Nassimi).....	200	Sta-soft.....	300
Heritage (Omnova).....	300	Stratosphere.....	300
Hexx.....	200	Stucco.....	300
Hitch.....	300	Sundance.....	300
Hologram.....	200	Surfside/Stratford.....	300
Impression.....	400	Surrey.....	300
Independence.....	200	Synchronicity.....	300
Interlace.....	400	Token.....	400
Intrepid.....	300	Traveler.....	300
Invision.....	400	Twist.....	300
Islander.....	200	Universal.....	200
Kaleidoscope.....	400	Vector.....	300
Kimono.....	300	Venue.....	300
Kinetic.....	500	Vibe.....	200
Landscape.....	300	Vintage.....	300
Liberty.....	200	Virtue.....	300
Margin.....	400	Vista.....	300
Maverick.....	200	Vivo.....	300
Mimic.....	300	Whisper.....	300
Monticello.....	200	Wicker.....	300
Motive.....	200	Wired.....	300
Mulberry.....	500	Wish.....	300
Muse.....	300	Wonder.....	300
Natural Linen.....	300	Zodiac.....	300
Natural Movements.....	300		
Nauga Leather.....	300		
Nauga Soft.....	300		
Naugaform.....	400		
Naugahyde CP 1967 ..	300		
Naugasylk.....	300		
Navigator.....	200		
Neochrome III.....	300		
Nexus.....	300		
Origin.....	200		
Outback.....	300		
Oxen(Nassimi/Sprad) ..	200		
Oxen (Naugahyde).....	200		
Patriot.....	300		
Persuasion.....	200		
Phoenix.....	200		
Pioneer.....	300		
Polished.....	300		
Prizm.....	200		
Prodigy.....	200		
Promise.....	300		
Quill.....	200		
Quilted.....	400		
Rattan.....	300		
Reflex.....	300		
Refresh.....	300		
Renaissance.....	300		
Reptile.....	200		

FABRIC PROGRAM

Fabrics listed may have been discontinued or price changed since publishing.

CF STINSON

Ace.....300	Fractal.....600	Pinball.....500	Zanzibar.....700	Round Trip.....600
Acrobat.....600	Full Turn.....600	Pivot.....300	Zoom.....500	Route.....300
Adagio.....500	Furrows.....300	Polka.....300		Satchel.....300
Aero.....300	Gesture.....700	Posey.....500		Scout.....300
Alfresco.....500	Gradation.....400	Posh.....500	VINYL & NON PVC	Script.....400
Alignment.....600	Graph.....400	Power Grid.....600	Amplify.....200	Sentry HC.....300
Anagram.....500	Gravity.....500	Prodigy.....700	Ardent.....300	Shantung.....300
Armature.....600	Handwork.....500	Profile.....300	Avant.....300	Sirocco.....600
Artisan.....300	Happy Tappy.....700	Progression.....500	Bistro.....300	Sleek.....300
Bass Line.....600	Haven.....500	Queue.....600	Budget Black.....200	Smoothie.....300
Batik.....600	Helix.....600	Raquette.....500	Burkshire.....300	Spirit Millennium.....300
Beatbox.....500	Hexie.....700	Realm.....500	Carlisle.....400	Stat-Con.....500
Bespoke.....400	Hi-Fi.....300	Refraction.....300	Cassablanca.....600	Stitch in Time.....300
Blip.....300	Highlands.....400	Retrograde.....300	Catalyst.....300	Strand.....300
Bliss.....700	Highlight.....300	Revolution.....500	Channel.....300	Stride.....300
Block Party.....600	Hive.....300	Rhythm.....Call	Chroma.....500	Symphony Classic.....300
Bloom.....Call	Hush.....600	Riddle.....300	Cirque.....500	Tendril.....300
Bongo.....600	I Spy.....600	Ritz.....500	Citadel.....300	Tessuto.....300
Boomerang.....600	Infinity Plush.....700	Rubric.....600	Clean Slate.....300	Touchstone.....300
Borderline.....600	Inside Track.....300	Salinas.....Call	Colorguard.....300	Vegas.....300
Breton.....600	Jillian.....300	San Simeon.....700	Connect.....300	Walk the Line.....600
Brilliant.....300	Kalahari.....600	Satellite.....400	Core.....300	Weft.....300
Brixton.....600	Kennebunk.....600	Season.....700	Criss Cross.....300	Whisper.....300
Broadband.....600	Kinetic.....500	Semaphore.....400	Diva.....300	Ziggy.....300
Brushwork.....600	Knot.....500	Sensor.....600	Dodgeball.....600	Zodiac.....300
Bryant Park.....300	Lateral.....300	Sequence.....300	English Pub.....300	
Calibration.....600	Lifecycle.....700	Serene.....700	Essential.....200	NON PVC
Cannon Beach.....700	Lift.....700	Shift.....300	Expressions.....300	Arioso.....500
Catalina.....600	Lorelai.....400	Shimmy.....400	Fizz.....300	Bond.....600
Celeste.....500	Luster.....500	Shuffle.....Call	Flanders.....300	Chaos.....700
Ceremony.....600	Madox.....400	Sideline.....400	Frequency.....500	Corium.....500
Charlotte.....300	Malone.....400	Sleeping Bear Dunes.....600	Fuse.....200	Dakota.....300
Cinema.....600	Mandala.....500	Splice.....700	GeoMet.....400	Didi.....500
Cirro.....600	Mantra.....700	Sprint.....300	Grand Sierra.....300	Effervescense.....600
Coco.....500	Marquetry.....600	Square One.....300	Grille.....300	Etch.....600
Colden.....600	Maxwell.....300	Squire.....500	Hopsack.....300	Fiberdrill.....500
Color Block.....600	Maze.....600	Stellar.....400	Kilkenny Tweed.....300	Galileo.....500
Comeback.....600	Migration.....700	Steppe.....600	Kusari.....300	Glisten.....Call
Continuum.....400	Mingle.....600	Storyboard.....700	Lara.....200	Impress w/StakKleen.....500
Converge.....600	Moby.....300	Stuff.....Call	Laredo.....300	Kid.....500
Current.....700	Mod.....600	Summit.....500	Level.....400	Mesa.....Call
Dart.....300	Modernist.....700	Sunburst.....600	Loophole.....400	Modena.....500
Deflection.....500	Monhegan.....600	Supersilliness.....700	Matrix.....500	Moxie.....500
Detail.....400	Montage.....500	Swipe.....600	Meteor.....600	Petal Dots.....600
Divvy.....700	Multiply.....Call	Swivel.....600	Mica.....300	Sedona.....Call
Donegal.....500	Nest.....600	Sync.....700	Moccasin.....300	Silicone-Avail.....600
Drift.....500	Network.....500	Tangram.....500	Montana.....300	Silicone-Downtown.....700
Drizzle.....700	New Hempstead.....300	Thrive.....700	Natural World.....600	Silicone-Max ONE.....700
Duet.....500	Nimble.....500	Tidbit.....500	Naugaleather.....300	Silicone-Uptown.....700
Eddy.....700	Nova.....400	Torus.....500	Naugasoft.....300	Solitaire.....300
Elderberry.....600	Obscura.....400	Touch Base.....400	Neochorme III.....300	Staple.....300
Equator.....600	Offset.....600	Tranquility.....600	Nishiki.....300	Sundance w/StakKleen.....500
Equinox.....500	Olivia.....300	Transcend.....300	Orbit.....300	Tender.....Call
Euclid.....300	Outlander.....300	Tribeca.....300	Overlay.....400	Volterra-HC.....Call
Fast Lane.....300	Pacifica.....700	Trio.....600	Oxford.....300	Wyatt.....400
Feature.....Call	Paloma.....400	Tweed.....500	Patriot Plus II.....300	
Fenestra Too.....600	Paradox.....600	Twiggy.....500	Ping Pong.....600	CLODAGH
Figment.....600	Park Avenue.....600	Vanish.....700	Pod.....600	Deza.....600
Fleck.....300	Passport.....500	Vapor.....600	Promenade.....500	Jala.....700
Flex.....300	Penelope.....500	Velocity.....500	Raffia.....400	
Flight.....700	Pergola.....500	Voltage.....600	Rally.....200	MICHAEL GRAVES
Flip Flops.....600	Perimeter.....400	Whirl.....600	Rialto.....300	Grove.....600
Folio.....600	Piccadilly.....500	Wish.....Call	Rogue II.....200	

CF STINSON, CONTINUED

PATTY MADDEN	
Lucent.....	700
Radiance.....	700

ROBERT STERN	
Cyma	500
Scintillate	600
Stratford	Call

MICHAEL GRAVES VINYL	
Entrada.....	400
Excursion.....	200
Latitude	200
Valise	200

PATTY MADDEN VINYL	
Affinity.....	500
Banyan.....	500
Bari	500
Bubblerrake.....	600
Eli.....	500
Hashtag.....	500
Juxy.....	500
Lava	600
Live Wire	500
Martini	500
Median	500
Olympus.....	500
Perspective.....	500
Plexus.....	500
Prisma	500
Raya.....	600
Revolve	600
Ripple.....	600
Rivera	500
Twist.....	600
Vortexia	600
Waterwand.....	600
Wicker.....	500
Winnly	400
Ybor.....	500

GENUINE LEATHER	
R.E.I.L.	Call

CAMIRA

24/7	500
Aquarius.....	400
Armadillo	600
Blazer.....	500
Blazer Lite.....	400
Canopy.....	300
Craggan	600
Craggan Flax.....	600
Dolly	700
Ebb	400
Era	300
Flow.....	400
Gravity.....	300
Halcyon Aspen	400
Halcyon Blossom	400
Halcyon Cedar	400
Hemp	500
Honeycomb.....	400
Individuo.....	500
Kyoto	400
Landscape Balance..	500
Landscape Contact...	500
Main Line Flax.....	500
Main Line Flax Stripe	500
Manhattan	300
Nettle Aztec.....	600
Nexus.....	300
Oceanic.....	400
Patina.....	400
Port.....	300
Regent.....	500
Rivet	300
Silk.....	600
Sprint.....	300
Sumi	400
Synergy.....	500
Synergy Quilts.....	600
Touch	400
Track.....	500
Vintage	Call
Yoredale	600
Zap.....	600

FABRIC PROGRAM

Fabrics listed may have been discontinued or price changed since publishing.

DOUGLAS

A La Mode.....400	Chain Dot.....200	Entice.....200	Jolie.....400	Parlour.....200
Abacus.....300	Chakra.....400	Entwined.....400	Joseph.....200	Pasadena.....300
Acacia.....300	Chalet.....300	Envy.....200	Keen.....300	Passion.....200
Acadia.....300	Chamberlin.....400	Equal.....300	Kelso.....300	Pembroke.....300
Accessory.....300	Chance.....300	Escapade.....200	Kilim.....400	Pendulum.....200
Adams.....200	Chariot.....300	Escort.....200	Kirby.....300	Penobscot.....300
Adore.....300	Charleston.....400	Eternity.....200	Kismet.....300	Pentagon.....200
Allure.....200	Charlotte.....300	Excel.....200	Kyoto.....400	Pentel.....300
Amazement.....200	Charm.....300	Exemplar.....200	La Boheme.....300	Pepperell.....300
Amherst.....200	Chartes.....400	Extreme.....300	Lair.....300	Persia.....400
Applique.....300	Chateaux.....400	Fable.....300	Lascia.....400	Piazza.....200
Arbor.....300	Chi Chi.....300	Fanatic.....200	Lavish.....300	Picotage.....300
Archetype.....200	Chiaro.....400	Fascination.....200	Leaf.....400	Pied A Terre.....400
Arrondi.....300	Chronicle.....300	Fidget.....300	Linden.....200	Pilot.....200
Asana.....400	Cicely.....300	Fisher.....300	Linea.....300	Pincurl.....400
Ashbury.....300	Circuit.....200	Fizz.....200	Link.....200	Plantation.....300
Astute.....300	Cirque.....300	Flagstaff.....300	Lodge.....400	Pleat.....300
Atelier.....400	Clapham.....300	Flash.....400	Loft.....400	Pocasset.....300
Austin.....300	Clove.....300	Fling.....200	Loopy.....200	Pocomo.....300
Backgammon.....300	Club House.....400	Flip.....200	Lush.....300	Pomona.....300
Bainbridge.....300	Codger.....300	Florida Straits.....200	Malino.....400	Ponset.....300
Balance.....200	Cohansey.....200	Flounce.....300	Manga.....400	Portland.....300
Bandeau.....300	Columbia.....200	Flower Power.....300	Marigold.....400	Precedent.....200
Baskerville.....300	Compass.....300	Flutter.....200	Marisal.....400	Pressed Leaves.....400
Baslow.....400	Confetti.....400	Forage.....300	Marvel.....200	Preston.....300
Baste.....300	Converge.....300	Fortune.....300	Mayfair.....300	Primary.....200
Bauble.....300	Cornell.....200	Fountain.....400	Maze.....200	Princeton.....200
Bemberg.....300	Courage.....200	Foxy.....300	Mead.....300	Prisma.....300
Bendal.....300	Craftsman.....400	Frequent.....200	Mercer.....300	Provincial.....200
Bento.....400	Craze.....300	Frolic.....200	Millefleur.....400	Prudential.....300
Bergama.....400	Crisscross.....300	Frou Frou.....400	Mombasa.....300	Purdue.....200
Berkeley.....200	Crossroads.....400	Fuse.....300	Montmartre.....400	Puzzle.....300
Berman.....300	Curvaceous.....300	Gameboard.....400	Moulin.....400	Rabanna.....400
Beyond.....200	Cycle.....200	Gamut.....300	Moxie.....300	Rally.....300
Bimini.....200	Dainty.....400	Gauge.....200	Mungo.....300	Ramble.....400
Biscayne.....300	Dapper.....300	Getty.....300	Nairobi.....300	Random.....400
Bisous.....400	Dartmouth.....200	Glee.....200	Namaste.....400	Rappel.....200
Boat House.....400	Dayo.....300	Glide.....200	Nara.....400	Razor.....400
Bon Vivant.....300	Deck House.....400	Glint.....300	Natty.....300	Reality.....300
Bongani.....300	Del Mar.....200	Gorge.....300	Newel.....400	Recoil.....400
Botswana.....300	Deluxe.....300	Grace.....300	Newton.....300	Refined.....400
Boulevard.....400	Denali.....400	Gradient.....200	Nia.....300	Reflection.....400
Bounce.....200	Destiny.....300	Green House.....400	Nouvelle.....400	Reflex.....400
Branchport.....300	Domaine.....300	Greta.....300	Novel.....200	Reticulate.....400
Branco.....200	Drama.....200	Guild.....300	Numbers.....300	Reverb.....400
Brisk.....300	Dreamy.....200	Haiku.....400	Nuru.....300	Revere.....200
Bundle.....300	Droplet.....300	Hamlet.....200	Ogee.....400	Reversal.....400
Bungalow.....400	Duke.....200	Hancock.....200	OM.....400	Rhumba.....200
Bungee.....400	Duma.....300	Happenstance.....300	Oni.....300	Rhythm.....400
Burbank.....300	Duplex.....300	Harvard.....200	Optima.....300	Rickshaw.....400
Cabo.....200	Durango.....400	Haze.....400	Origami.....400	Rima.....300
Caboose.....400	Echelon.....200	Helena.....400	Orsay.....300	Ring.....200
Calibrate.....200	Echo.....200	Henry.....200	Paddle.....300	Ritz.....300
Canal.....300	Edgy.....300	Herati.....400	Pagoda.....300	Rive Gauche.....400
Canopy.....300	Electricity.....200	Hewitt.....200	Palais.....400	Rolo.....300
Canson.....300	Electron.....200	Homestead.....400	Palmer.....300	Romance.....400
Cape Cod.....400	Elite.....200	Hoopla.....400	Palmyra.....300	Roundabout.....300
Carlyle.....300	Embassy.....200	Icon.....200	Pantheon.....200	Row.....300
Carriage House.....400	Embellish.....200	Impromptu.....200	Papiro.....300	Runway.....200
Cartwheel.....300	Emcee.....200	Incense.....400	Parallel.....200	Sachet.....300
Castellani.....300	Endwise.....400	India.....400	Parasail.....200	Sandal.....400
Celeste.....300	Energize.....200	Jambo.....300	Parkside.....300	Sarong.....400
Centrum.....300	Enigma.....200	Jaunty.....300	Parliament.....200	Sassy.....300

DOUGLASS, CONTINUED

Satellite.....	300	Tamu.....	300	Aristo.....	300	Hackney.....	200	Seduction.....	300
Savile.....	300	Tanner Stripe.....	400	Aura.....	400	Hemingway.....	400	Sequins.....	300
Scoop.....	300	Tanzania.....	300	Ballistic.....	300	Heritage.....	200	Shagreen.....	300
Score.....	400	Taper.....	300	Bally.....	400	Hitch.....	300	Silvertex.....	300
Sendal.....	300	Tartaine.....	200	Baron.....	400	Huxley.....	400	Solino.....	300
Serendipity.....	300	Tea Leaves.....	300	Bayou.....	200	Hyde.....	200	Solitaire.....	300
Shawl.....	400	Tembo.....	300	Beckett.....	400	Impression.....	300	Spark.....	300
Shenandoah.....	300	Temple.....	200	Benjamin.....	300	Imprint.....	300	Spirit Millennium.....	300
Sherpa.....	200	Tempt.....	300	Bergeret.....	400	Inclination.....	300	Spirit Supreme.....	300
Shiatsu.....	300	Terrace.....	500	Berwick Tweed.....	300	Independence 2.....	200	Spotlight.....	400
Shindig.....	200	Tetrus.....	200	Bomber.....	400	Indy.....	200	Stable.....	300
Shire.....	200	Token.....	300	Bongo.....	300	Interlace.....	300	Sta-Soft.....	200
Shoji.....	400	Tom's Garden.....	300	Bottega.....	200	Invision.....	300	Steel Pier.....	300
Shuffle.....	300	Touchstone.....	200	Bourbon Street.....	200	Jitter.....	400	Steps.....	300
Sidestep.....	300	Trail.....	400	Brink.....	300	Jive.....	400	Stipple.....	300
Siesta.....	300	Trapeze.....	300	Brisa.....	600	Kaleidoscope.....	300	Strada.....	500
Silk Road.....	400	Trapezoid.....	300	Brisa Distressed.....	700	Katana.....	400	Stratosphere.....	300
Simba.....	300	Tree House.....	400	Burkshire.....	300	Kernal.....	400	Surface.....	300
Siren.....	400	Trendsetter.....	300	Caesar.....	300	Kilkenny Tweed.....	300	Surfside.....	300
Skittle.....	300	Trifle.....	300	Caliber.....	200	Kiln.....	300	Surge.....	300
Slalom.....	300	Trinket.....	300	Canyon.....	200	Kimono.....	300	Surrey.....	300
Slide.....	200	Triumph.....	300	Capote.....	400	Kipper.....	400	Symphony.....	300
Soffit.....	300	Trotter.....	300	Casablanca.....	300	Kosta.....	400	Symphony Classic.....	200
Soiree.....	400	TV Land.....	300	Caso.....	200	Latch.....	300	Symphony Glaze.....	300
Solenoid.....	300	Tweed.....	300	Chadwick.....	200	Luxe.....	300	Symphony Lumina.....	400
Sophie.....	300	Twinkle.....	300	Chaise.....	400	Manco.....	400	Symphony Ultra.....	400
Sorti.....	300	Twirl.....	300	Chambray.....	300	Marble.....	300	Symphony Vintage.....	300
Soul.....	300	Twist.....	200	Chamea II.....	200	Marblestone.....	300	Synchronicity.....	300
Spartan.....	200	Twitter.....	200	Circus.....	400	Minuet.....	300	Taffy.....	200
Spencer.....	300	Usher.....	200	Clarke.....	400	Mirage.....	300	Tokio.....	300
Spiral.....	400	Utley.....	300	Claudet.....	400	Morey.....	300	Tolstoy.....	400
Spirograph.....	400	Utmost.....	200	Clutch.....	300	Morisot.....	400	Toscana.....	500
Spot.....	400	Utopia.....	200	Colorguard.....	200	Muse.....	300	Tram.....	300
Spout.....	200	Valle.....	300	Connect.....	200	Natural Linen.....	200	Traveler.....	300
Squire.....	200	Vanguard.....	300	Cork.....	400	Nauga Soft.....	200	Treasure.....	300
St. Germain.....	400	Versa.....	200	Cosmopolitan.....	300	NaugaLeather.....	300	Trex.....	200
Stacatto.....	200	Video.....	200	Courbet.....	400	Neochrome II.....	300	Twain.....	400
Stargaze.....	300	Viletta.....	300	Crafted Grids.....	300	New Duration.....	300	Twilight.....	300
Starlet.....	200	Vinea.....	400	Curio.....	200	Nuance.....	200	Twist.....	300
Static.....	400	Visa.....	400	Dauntless.....	200	Palm Harbor.....	300	Ultraleather.....	600
Stencil.....	400	Volute.....	300	Deville.....	400	Paris.....	300	Ultraleather Pro.....	700
Straightaway.....	300	Volute FR.....	300	Dimension.....	300	Patriot Plus.....	200	Universal.....	200
Strathmore.....	300	Wayfare.....	300	Discover.....	200	Pearlized.....	600	Valinda.....	300
Stryker.....	300	Wellesley.....	200	Dolce.....	300	Persuasion.....	200	Vdara.....	300
Stylish.....	300	Wiggle.....	400	Dumont.....	400	Phoenix.....	200	Vermillion.....	300
Suave.....	400	Windfall.....	300	Easel.....	200	Piano.....	400	Vermont.....	300
Suedegard.....	300	Wink.....	300	Eel.....	300	Plait.....	300	Verve.....	300
Summer House.....	500	Wish.....	400	Elm.....	300	Polo.....	300	Vibe.....	200
Sunshade.....	300	Witty.....	300	Emboss.....	200	Primera.....	500	Vicinity.....	300
Supreme.....	200	Woodland.....	200	English Pub.....	300	Promessa.....	700	Vitality.....	300
Surreal.....	200	Yale.....	200	Excaliber.....	200	Promise.....	300	Volley.....	300
Swahili.....	300	Yara.....	300	Expressions.....	300	Reflex.....	300	Whisper.....	200
Swank.....	300	Yoga.....	400	Faber.....	300	Renaissance.....	300	Wish.....	300
Swarthmore.....	200	Zanzibar.....	200	Fave.....	400	Render.....	200	Wonder.....	300
Swing.....	300	Zing.....	200	Ferris.....	300	Resort.....	300	Woven Hues.....	300
Swish.....	300	Zip Line.....	200	Flair.....	300	Riviera.....	300	Wynn.....	300
Switch.....	200	Zola.....	300	Fleck.....	200	Rouge II.....	200	Zodiac.....	300
Swizzle.....	300			Flume.....	300				
Sylvia.....	300	VINYL		Foundation.....	200	Salinger.....	400		
Taboret.....	300	All-American.....	200	Funhouse.....	300	San Remo.....	300		
Tadala.....	300	Allante.....	200	Gillian.....	300	Savanna.....	200		
Tailor Made.....	300	Arc.....	300	Gouache.....	200	Scandia.....	200		
Taj.....	400	Ardor.....	400	Grand Sierra.....	300	Seaquest.....	200		
						Seaquest RL 'N PLT.....	300		

FABRIC PROGRAM

Fabrics listed may have been discontinued or price changed since publishing.

MAYER

Align.....	300	Sequel (Duralock).....	300	Tattersall.....	400	Milano.....	300
Ankara.....	400	Shantung.....	300	Timeline.....	300	Molecule.....	600
Ascension.....	500	Sherlock.....	300	Xanadu.....	500	Neo.....	300
Avenue.....	500	Sophisticate.....	300			Niche.....	400
Bali.....	300	Spacer Mesh.....	300	LUCIA CASA		Noble.....	300
Batik.....	300	Static.....	600	Array.....	300	Outback.....	300
Botany.....	500	Suna.....	600	Botanica.....	400	Palermo.....	400
Circuit.....	600	Sutra.....	500	Geisha.....	600	Phoenix.....	300
Circumference.....	600	Sydney.....	200	Katagami.....	500	Ranchero.....	200
Continuum.....	300	Synapse.....	600	Obi.....	500	Rift.....	400
Cross Check.....	200	Tango.....	300	Samurai.....	500	Score.....	400
Dazzle.....	400	Theory 10.....	300	Turnabout.....	500	Splendor.....	400
Destiny.....	300	Valet.....	300	Vintage Mohair.....	Call	Vector.....	600
Destiny (Durablock) ..	300	Variant 10.....	300	Volante.....	Call	Verona.....	300
Duraweave 10.....	200	Venetian.....	Call	Wool Boucle.....	700	Zen.....	500
Echo.....	400	Vibrant.....	400				
Ecosphere.....	400	Villa.....	500	VINYL			
Elevation.....	400	Vipassana.....	500	All Seasons FR.....	200	** These patterns are	
Engrave.....	200	Vogue.....	300	Aspect.....	300	designed to simulate	
Ephesus.....	500	Volante.....	CALL	Catwalk.....	300	natural leather that	
Evolve.....	600	Wildflower.....	600	Chaps.....	300	features shade variations	
Facets.....	500	Zazen.....	500	Charette FR.....	300	and 'beauty marks'	
Fedora.....	300	Zen.....	500	Cirque.....	300	formed from wrinkles,	
Fiji.....	200			Contempo FR.....	300	stretch marks and	
Forte.....	200	WOVEN CRYPTON		Curlicue.....	300	usage. These effects are	
Foundation 10.....	200	Abbey.....	400	Dande.....	300	purposefully intended to	
Gem.....	300	Acclaim.....	400	Dublin Tweed FR.....	300	mimic those of real leather	
Genesis.....	300	Amadeus.....	500	Entwine.....	300	and are not defects in the	
Genesis (Durablock) ..	300	Arabesque.....	300	Essence.....	400	product.	
Gravity.....	500	Artistocrat.....	300	Etch.....	300	LEATHER	
Groundwork.....	400	Boro.....	600	Gala.....	400	Butte.....	Call
Haberdash.....	300	Channel.....	300	Images FR.....	300	Cheyenne.....	Call
Havana.....	200	Cosmopolitan.....	300	Interlace.....	300	Laramie.....	Call
Hexagon.....	300	Crazy Quilt.....	600	Interlochen.....	300		
Intrigue.....	300	Cuddle Up.....	500	Key Largo.....	300		
Jive.....	200	Darning.....	600	Links.....	300		
Jubilee.....	300	Debonair.....	400	Matka.....	300		
Labyrinth.....	500	Disco.....	300	Microdot.....	300		
Landscape.....	400	Escapade.....	400	Mingle.....	300		
Latitude.....	400	Fanfare.....	600	Mode.....	400		
Longitude.....	400	Finale.....	400	Sequence.....	300		
Lotus.....	600	Form.....	400	Silk Screen.....	300		
Madras.....	400	Fretwork.....	600	Silverweave.....	300		
Meander.....	300	Function.....	300	Sketch.....	300		
Monogram.....	300	Gatsby.....	400	Slick.....	300		
Moonscape.....	300	Holiday.....	400	Vinyl Stat ESD.....	400		
Mosaic.....	300	Jitterbug.....	300				
Mosaic (Durablock) ..	300	Journey.....	300	FAUX LEATHER			
Nylon-Stat ESD.....	500	Kantha.....	600	Antique**.....	300		
Odessa.....	400	Kensington.....	300	Apollo Silicone.....	600		
Optic 10.....	300	Lavish.....	400	Bolero.....	400		
Patio.....	300	London.....	400	Caressa FR.....	300		
Plaza.....	400	Malibu.....	400	Cascade.....	400		
Polygon.....	300	Mayfair.....	400	Cayman.....	400		
Prism 10.....	300	Nirvana.....	500	Chequers.....	400		
Quattro.....	200	Nostalgia.....	400	Durango.....	300		
Refuge.....	500	Obsession.....	500	Florentine.....	200		
Rejuvenate.....	500	Pastime.....	400	Galveston.....	300		
Relativity.....	600	Positive Thoughts.....	600	Imprint.....	300		
Reverb.....	300	Primo.....	400	Jekyll & Hyde**.....	300		
Rumba.....	200	Replay.....	400	Kobe.....	300		
Samba.....	200	Reveal.....	400	Longhorn.....	400		
Saori.....	600	Social Network.....	400	Matter.....	400		
Sequel.....	200	Soho.....	400	Maverick.....	300		

MOMENTUM

3d GridCall	Graph.....300	Quince.....700	Flock.....400	Silica Cusp.....600
Ace.....300	Grid.....300	Raft.....600	Gatsby.....600	Silica Deflect.....600
Aldo.....Call	Guideline.....600	Reveal.....700	Hobnob.....400	Silica Effloresce.....600
Allegory.....700	Guild.....300	Revolve.....700	Infinity.....300	Silica Etc.....600
Amenity II.....600	Habit.....300	Riga.....700	Infusion.....600	Silica Etch.....600
Amuse.....400	Hearsay.....600	Ring.....600	Kayak.....700	Silica Fiona.....600
April.....500	Highline.....600	Rise.....400	Keynote.....400	Silica Flick.....600
Audubon.....700	Hitch.....500	Rivet.....400	Kit.....400	Silica Fresco.....600
Bandwidth II.....600	Hop.....600	Rubato.....600	Marathon.....300	Silica Fritz.....600
Bangle.....300	Hue.....300	Rush Hour.....700	Millennium.....300	Silica Gadget.....600
Banter.....700	Insight.....300	Sail.....600	Oath.....500	Silica Hiatus.....600
Beep.....400	Interim.....700	Scrabble.....400	Odyssey.....300	Silica Hoop.....600
Beta.....400	Interlock.....Call	Siteline.....700	Phase.....700	Silica Jig.....600
Bobby.....300	Intermix II.....400	Sketching Air.....Call	Reverb.....700	Silica Kip.....600
Boom II.....400	Iota.....600	Skip.....300	Roster.....700	Silica Leather.....600
Borders.....600	Jitney.....600	Slice.....300	Score.....500	Silica Likely.....600
Boxcar.....600	Jot.....300	Small Talk.....600	Shuttle.....500	Silica Motive.....600
Brink.....600	Journal.....700	Solace.....400	Solitaire.....400	Silica Reach.....600
Brisk.....600	Kindle.....500	Spontaneous.....700	Sport.....400	Silica Roam.....600
Build.....400	Kinney.....400	Starboard.....600	Synergy.....500	Silica Scout.....600
Buoy.....600	Knack.....300	Story.....600	Tag.....600	Silica Spoke.....600
Cairns.....700	Lateral.....500	Stroll.....400	Tradition.....300	Silica Strata.....600
Camber.....700	Ledge.....400	Strum.....600	Trefoil.....500	Silica Stride.....600
Carlo.....Call	Lella.....Call	Strut.....400	Trilogy.....500	Silica Tech.....600
Centric.....600	Lens.....300	Sunny.....500	Viva II.....600	Silica Thatch.....600
Chipper.....700	Level.....600	Swim.....300	Waver.....500	Silica Today.....600
Chromatic.....600	Lina.....700	Syntax.....300		Silica Triad.....600
Cityscape.....700	Lineup.....300	Tack.....400	VINYL	Silica Waltz.....600
Civil.....600	Lloyd.....Call	Tactic.....700	Acoustic.....600	Silica Wifi.....600
Clang.....400	Lore.....600	Tech Weave.....Call	Agora II.....400	Silica Wifi.....600
Climb.....600	Lucio.....Call	Tesla.....600	Archer.....600	Stamp.....500
Collect.....400	Ludwig.....Call	Tilt.....600	Beeline.....400	Sublime II.....400
Colorwheel.....600	Mandala.....600	Toggle.....300	Bravo II.....500	Tact II.....600
Croquet.....600	Mapping Ideas.....700	Traction.....700	Canter.....400	Tanner.....300
Crossing Colors.....Call	Marcel.....700	Trapeze.....600	Cashmere II.....400	Tetra.....400
Cube.....600	Memory.....700	Trivia.....600	Chime.....500	Tribeca.....400
Culture.....500	Nagoya.....700	Tufted.....700	Club.....500	Vanguard.....400
Current.....300	Nimble.....700	Turin.....700	Cycle.....500	Velocity.....400
Cutout.....Call	Ohs II.....700	Uplift.....600	Echo II.....600	Vertu.....500
Dart.....300	Origin.....300	Veer.....500	Endurance.....400	Whit.....400
Dash.....600	Otto.....400	Via.....300	Eon.....400	Zipped.....600
Dayspell.....600	Painting Strokes.....700	Vox.....300	Evo.....300	
Decode.....300	Panorama.....700	Wander.....600	Foray.....500	
Delve.....500	Pantheon.....700	Weaving Palettes.....600	Fringe.....500	
Dive.....500	Parable.....600	Well Well Well.....Call	Groove.....400	
Drawing Lines.....700	Parenthesis.....300	Whim.....600	Halo.....600	
Drift.....600	Pax.....600	Why Why Why.....Call	Hark.....500	
Ebb.....700	Perk.....300	Widget.....300	Hive.....600	
Edison.....600	Photon.....600		Icon.....600	
Embark.....500	Phrase.....600	CRYPTON	Kindred.....600	
Epic.....300	Pierre.....Call	Acrobat.....500	Leno.....700	
Essay.....600	Ping.....400	Almanac.....700	Mogul.....400	
Explore.....700	Pip.....400	Analog.....700	Nifty.....400	
Expo.....300	Pique.....400	Ascend.....500	Printwork.....400	
Fleet.....500	Places Spaces.....Call	Byways.....600	Progress.....500	
Float.....400	Plan.....400	Central.....500	Rein II.....400	
Flow.....600	Platform.....600	Channel.....500	Row.....400	
Flux.....Call	Point.....300	Cover Cloth.....400	Sidestep.....600	
Focal.....400	Polka.....600	Docket.....700	Silica.....600	
Fold.....700	Propel.....600	Domain.....500	Silica Andy.....600	
Free.....400	Propensity II.....400	Etude.....700	Silica Arc.....600	
Fuse.....300	Prospect.....500	Evolve.....700	Silica Bracket.....600	
Geo.....Call	Proximity.....Call	Faux Felt.....400	Silica Checker.....600	
Glide.....500	Pursue.....600	Faux Mo.....500	Silica Compass.....600	

A BETTER CHAIR

Building a better chair starts with using only the finest domestic raw materials, employing skillfully trained craftsman, and close monitoring of the production process. In addition, we integrate consistent features in our products so they uniquely last a lifetime.

CONSTRUCTION

Joinery is a combination of dowel or mortise and tenon with additional hardened steel fasteners to provide the highest quality frame.

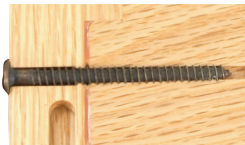
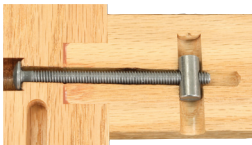


Interlocking corner block and rail joint lends superior strength at critical joints and provides optimum support for the seat suspension. This provides more durability and comfort for the life of the chair. All chair frames are reinforced with screws, not just glue, for rigidity and durability. Solid wood corner blocks provide support at all critical joints.



Depending on frame style, certain models feature our bolt & slug metal fastener for extra seat strength and durability. Seats are attached to frame with the bolt & slug fastener through front, back and side rails for structural joint construction that lasts a lifetime. We never attach through the corner block which weakens the joint structure and reduces the life and performance of a chair.

Other frame styles use our hardened steel confirmat metal fastener for extra seat strength and durability. Seats are attached to frame with the confirmat fastener through back and side rails for structural joint construction that lasts a lifetime. We never attach through the corner block which weakens the joint structure and reduces the life and performance of a chair.



Select upholstered styles utilize a flex-o-lator spring suspension for extra support and comfort, and reduces wear on the cushion and fabric for long term performance.



There are no shortcuts involved in building a chair to last a lifetime. Therefore, we build every chair from scratch, under our roof. From drying raw lumber to final cartoning, we self-perform all stages of building our furniture, so we can fully stand behind what we sell.

MANUFACTURING

Each year we purchase over two billion board feet of the finest Northern grown red oak and hard maple harvested within the United States. We work with responsible foresters located within the Midwest to ensure quality and availability.

This is where we stand out from the rest. Our lumber is stored up to a year, dried (yes, right here ourselves), graded, and sorted accordingly. Unlike many manufacturers that bypass this vital process for faster methods or purchase dried lumber. Starting with rawest of materials is how we've always done it and we haven't changed a bit.

Few contract seating companies practice the craft of steam bending, but we have mastered the process to bring more authentic beauty and structural integrity for chairs that last a lifetime. Steam bending allows the grain to follow the curve eliminating short grain inferiority inherent in bandsaw construction. To begin the steam bending process, we saturate chair components to precise pliability, steam bend into various shapes, and dry to a stable moisture content for years of solid comfort with high traffic use.

Relying on the finest machinery from around the world, we are able to build our product quickly, accurately, and to the highest possible quality.

Constant quality checks are made throughout the assembly process. Frame assembly is controlled to secure proper fit and form.

Before receiving the final sanding, every chair is inspected to ensure the proper amount of glue was used and each frame is square and fastened properly. During the sanding process we flush out joints and create smoothness in preparation for finish.

Each chair is put through numerous straining and sanding processes for smoothness. Multiple layers of catalyzed varnish are applied. Chairs then pass through several temperature controlled ovens to cure the finish for ultimate durability.

Material is precisely cut, measured, and upholstered. A final inspection to ensure consistency of the order and all quality standards are met. Then, product is securely packaged and prepared for shipping.

The old way never gets old.



ORDERING

KEY

BASE MODEL

US upholstered seat
UB upholstered backrest
UBS upholstered seat and backrest
BS barstool
S stool
SB sled base

FUNCTIONAL OPTIONS

CA casters
MO motion seat
ST stacking
UA upholstered arm pad
BA bariatric
HH handhold
RTA tablet arm
HB high back
GHH ganging hardware

DECORATIVE FEATURES

NT nail trim
C circle cutout
3C three circle cutout
TC square cutout
3S three square cutout
L line cutout
3L three line cutout
DS decorative stitching
CB cosmetic buttons

GUIDELINES

All orders must be written and clearly state quantity, model number, wood species, finish selection, fabric selection, expected delivery date, and shipping address to be entered. Within a maximum of five days, an acknowledgment is provided. It is the customer's responsibility to check the accuracy of all information.

Submit orders to:

Email
orders@jasperchair.com

Online

jasperchair.com/resources/quotes-and-ordering

Mail

Jasper Chair
534 E 8th Street
Jasper, IN 47546

NEW ACCOUNTS

To expedite the process, please fill out the new account form in its entirety. The form is available from your local representative, Customer Service or online at jasperchair.com/resources/quotes-and-ordering.

ORDERING EXAMPLES

Model numbers represent basic style, size and type of chair. The numbers within a model strand indicate most similar product, families. Additional designators are built into the model number and indicate functional and decorative options. These are outlined in above key.

To order chairs and stools, specify:

1. Core model number, indicating seat height when needed
2. Wood specie
3. Wood finish color
4. Fabric selection, including vendor, pattern and color
5. Options, such as glides, casters, nail trim, channels, etc

105US | Oak | Cordovan | Mayer | Saucy | Blue | NT | CA
(1) (2) (3) (4) (4) (4) (5) (5)

To order lounge, specify:

1. Core model number, indicating seat span when needed
2. Arm style
3. Wood specie
4. Wood finish color
5. Fabric selection, including vendor, pattern and color
6. Options, such as ganging, etc

5710-2 | WS | Oak | Cordovan | Mayer | Saucy | Blue
(1) (2) (3) (4) (5) (5) (5)

To order tables, specify:

1. Core model number, indicating size and shape
2. Edge selection and profile
3. Leg or base style
4. Wood specie
5. Wood finish color
6. Laminate selection, include vendor, pattern, and color

L42RP29 | D | S | Oak | Cordovan | Wilsonart | Graphite | Nebula
(1) (2) (3) (4) (5) (6) (6) (6)

TERMS

PRICING

All prices shown are list and are F.O.B. factory. Effective price lists supersede any and all prices previously quoted and are subject to change. Jasper Chair will only honor pricing from an effective price list or a valid written quote.

FREIGHT ESTIMATES

Freight estimates are approximated costs and are subject to change within 30 days of a written quote. Please contact our Customer Service for confirmed or revised pricing.

ORDERS

All orders must clearly state the quantity, model number, wood species, finish selection, fabric selection if applicable, expected delivery date, and shipping address to be entered. It is the responsibility of the company placing the order to supply Jasper Chair with all the necessary information. We accept no liability for an incomplete order. Incomplete orders cannot be entered and cannot be scheduled into production until all the necessary information is received. If you place an order with Jasper Chair and do not receive an order acknowledgment within five business days, please contact the factory.

ACKNOWLEDGMENTS

Order acknowledgments are sent the same day the order is entered. Please review the acknowledgment and contact the factory within 48 hours of receipt if corrections are necessary. Later changes will be subject to factory approval and possible charges depending on the status of the order. Orders being processed in two weeks or less will not be allowed to change after the order is entered.

ORDER AMENDMENTS

Amendments to an entered order must be done in writing. There may be charges assessed depending on the status of the order.

CANCELLATIONS

Cancellation of an order must be done in writing. There may be charges assessed depending on the status of the order. Orders specifying a custom finish may not be canceled once the finish process is underway.

SHIPMENTS

Jasper Chair will select a quality carrier with the best possible freight rate unless a carrier has been specified in writing on the order. If a dealer selects the carrier, Jasper Chair cannot be held liable for any damages that occur to said shipment.

FREIGHT CLAIMS

All shipments are delivered to the carrier in good condition and our liability ceases thereafter. Please inspect all shipments upon receipt and note any shortages or damages on the bill of lading. If the shipment arrives damaged or short, and Jasper Chair has chosen the carrier, you must notify the factory within 7 days of receipt of the shipment. However, if the carrier is one of your own choosing, you should file a claim immediately with the carrier. Failure to file a claim within 7 days after receipt of the shipment constitutes acceptance and a waiver of any possible claim.

RETURNS & REPAIRS

All returns must be factory authorized and must be shipped freight prepaid. Any shipment returned unauthorized or freight collect will be refused. Upon receipt of the returned product, Jasper Chair will determine whether the product is defective. Liability for defective products is limited to repair or replacement. There will be no credit issued for returned product.

REPLACEMENT PARTS

Please contact your factory service person for help and pricing concerning replacement parts.

WARRANTY

Each piece of furniture manufactured by Jasper Chair is warranted to the original purchaser to be free from defects in material or those resulting from workmanship for a period of five years. All swivel controls, glides, casters, and fabrics are warranted by their respective manufacturers based on their conditions. This warranty does not apply to damage resulting from misuse or accident. Warranty claims must be in writing and Jasper Chair will determine whether to repair or replace the defective product.

CARE & MAINTENANCE

Periodic inspections should be made to determine if the wood surface is soiled. If so, clean using a mild household cleaner and damp cloth. The wood finish is resistant to body oils and perspiration, but should be cleaned when a soiled condition is noticeable.

Should ink, lead, or paint soil the wood finish, immediately refer to the manufacturer's recommendations for cleaning from a varnish or a painted surface.

If the surface becomes scratched, use a touch-up material compatible with varnish. Do not use any lacquer type materials, as this will cause the finish to lift or blister.

When the upholstery fabric becomes soiled, use a name brand fabric cleaner or shampoo as per the manufacturer's instructions. Should the fabric be soiled with ink, lead, or paint, immediately refer to the manufacturer's recommendations to remove.

Chair frame maintenance requires periodic inspections of the joints, especially the back post to side rail joint. Check to be sure all screws

are tight and if any screws have become loosened; tighten. Should any part of the chair frame develop a crack or break, immediately remove the chair from use and contact a qualified furniture repair person or contact the factory for assistance.

Wood is greatly affected by moisture or more importantly the lack of moisture. The best relative humidity ranges between 35 to 45 percent at 70 to 80 degrees Fahrenheit. If your building's relative humidity level is below 35 percent, a system that adds moisture into the air needs to be employed. The worst time of year for moisture related troubles is during the winter as heating systems extract moisture from the air. Chairs with solid wood seats are very sensitive to drops in humidity. The solid wood chair seat will be the first part of the chair to show signs of lack of moisture and develop small end grain checks or splits. Should this occur, please check to see if the relative humidity level in your building is at the proper level.

Should any unusual problem occur, contact the factory or a factory representative for assistance.