

# COATEDCOORDINATES I

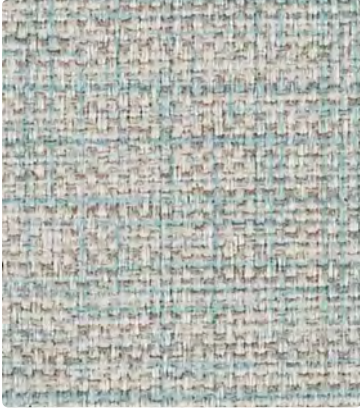
---

Interactive Card



**MAYER**FABRICS

## MINGLE



MG-026  
Cloud



MG-002  
Straw



MG-009  
Melon



MG-023  
Turquoise



MG-003  
Aloe



MG-027  
Hemp



MG-036  
Rain



MG-019  
Persimmon



MG-001  
Rouge



MG-004  
Indigo



MG-013  
Aqua



MG-030  
Taupe



MG-016  
Sterling

## FLORENTINO



FT-026  
Dove



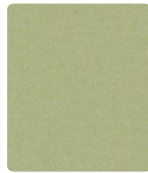
FT-032  
Jonquil



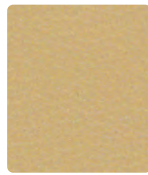
FT-011  
Lipstick



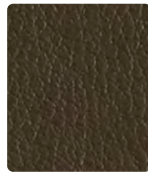
FT-044  
Turquoise



FT-033  
Willow



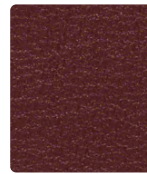
FT-027  
Khaki



FT-020  
Bark



FT-029  
Mango



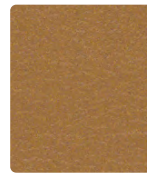
FT-009  
Chili



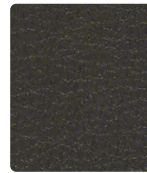
FT-004  
Sapphire



FT-043  
Basil



FT-022  
Caramel



FT-016  
Slate

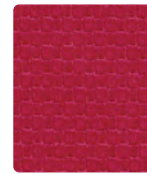
## ETCH



EH-010  
Shiitake



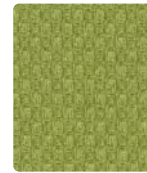
EH-002  
Marigold



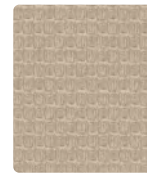
EH-001  
Flame



EH-014  
Denim



EH-003  
Lime



EH-007  
Sand



EH-036  
Nickel



EH-009  
Mango



EH-005  
Grape



EH-004  
Sapphire



EH-034  
Crystal



EH-019  
Penny



EH-016  
Charcoal

## MATKA



MT-024  
Seafoam



MT-002  
Chamois



MT-001  
Cherry



MT-014  
Cerulean



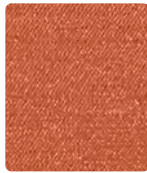
MT-013  
Spring



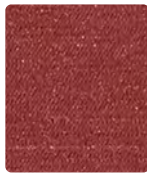
MT-020  
Burnish



MT-036  
Titanium



MT-009  
Harvest



MT-011  
Wine



MT-004  
Lapis



MT-003  
Clover



MT-000  
Shiitake



MT-016  
Shadow

## MODE



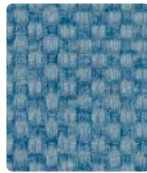
MO-004  
Chambray



MO-002  
Straw



MO-001  
Persimmon



MO-024  
Denim



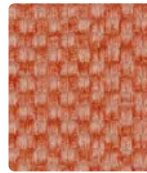
MO-003  
Celery



MO-016  
Silver



MO-006  
Pewter



MO-011  
Paprika



MO-005  
Orchid



MO-034  
Ink



MO-013  
Jade

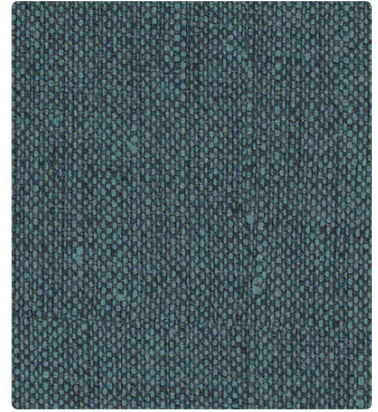


MO-000  
Burlap

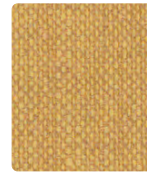


MO-044  
Spruce

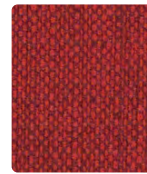
## KEY LARGO



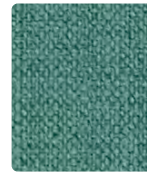
KL-014  
Aegean



KL-012  
Wheat



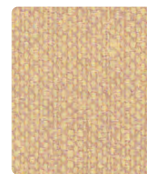
KL-001  
Crimson



KL-024  
Nassau



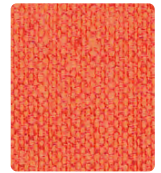
KL-033  
Pear



KL-027  
Sand



KL-026  
Quarry



KL-009  
Tangerine



KL-015  
Crocus



KL-004  
Ultramarine



KL-003  
Jungle



KL-020  
Sandstone



KL-006  
Graphite

# TECHNICAL INFORMATION

## Coated Coordinates I | Interactive Card

| Pattern 54"                            | Content and Backing                                       | Certifications | Weight/<br>Linear Yd. | Pattern<br>Repeat | Finish  | Abrasion<br>Wyzenbeek   | Light-<br>Fastness | Flammability  | Cleaning<br>Code |
|--|---|----------------|-----------------------|-------------------|---|-------------------------|--------------------|---|------------------|
| <b>ETCH</b><br><i>Directional</i>      | 78% Vinyl - Phthalate Free face,<br>22% Polyester backing | GREENGUARD     | 30 oz.                | None              | Soil and Stain Resistant<br>Top Coat with Ink<br>Resistant Technology | 100,000^<br>Double Rubs | 300 hours          | Cal. 117-2013<br>NFPA 260/UFAC Class 1<br>FMVSS 302 | BC, CFC          |
| <b>FLORENTINO</b>                      | 85% Vinyl - Phthalate Free face,<br>15% Polyester backing | GREENGUARD     | 28 oz.                | None              | Soil & Stain Resistant Top<br>Coat with Ink<br>Resistant Technology   | 651,000^<br>Double Rubs | 650 hours          | Cal. 117-2013<br>NFPA 260/UFAC Class 1<br>FMVSS 302 | BC, CFC          |
| <b>KEY LARGO</b><br><i>Directional</i> | 85% Vinyl - Phthalate Free face,<br>15% Polyester backing | GREENGUARD     | 28 oz.                | None              | Soil and Stain Resistant<br>Top Coat with Ink<br>Resistant Technology | 250,000^<br>Double Rubs | 650 hours          | Cal. 117-2013<br>NFPA 260/UFAC Class 1<br>FMVSS 302 | BC, CFC          |
| <b>MATKA</b><br><i>Directional</i>     | 80% Vinyl - Phthalate Free face,<br>20% Polyester backing | GREENGUARD     | 30 oz.                | Non-<br>Matching  | Soil & Stain Resistant Top<br>Coat with Ink<br>Resistant Technology   | 250,000^<br>Double Rubs | 500 hours          | Cal. 117-2013<br>NFPA 260/UFAC Class 1              | WS, BC,<br>CFC   |
| <b>MINGLE</b><br><i>Directional</i>    | 80% Vinyl - Phthalate Free face,<br>20% Polyester backing | GREENGUARD     | 30 oz.                | None              | Soil and Stain Resistant<br>Top Coat with Ink<br>Resistant Technology | 250,000^<br>Double Rubs | 300 hours          | Cal. 117-2013<br>NFPA 260/UFAC Class 1<br>FMVSS 302 | WS, BC,<br>CFC   |
| <b>MODE</b><br><i>Directional</i>      | 81% Vinyl - Phthalate Free face,<br>19% Polyester backing | GREENGUARD     | 30 oz.                | Non-<br>Matching  | Soil and Stain Resistant<br>Top Coat                                  | 100,000^<br>Double Rubs | 1000 hours         | Cal. 117-2013<br>NFPA 260/UFAC Class 1              | BC, CFC          |

### REDUCED ENVIRONMENTAL IMPACT

These products are GREENGUARD Certified for low chemical and particle emissions to UL standard UL 2818 and may contribute to LEED certification.

No FR Additives      No Antimicrobial/Antibacterial Additives

### CARE AND CLEANING INFORMATION

WS: Water/Solvent Cleaner      CFC: Coated Fabrics Cleaning – Refer to Mayer website for complete cleaning info.

BC: Bleach Cleanable – 1 part bleach, 9 parts water = 10% bleach, 90% water solution. **Do not clean/disinfect fabric for longer than 10 minutes using the 10% bleach solution. Always rinse promptly with clean water after applying the bleach solution. Failure to do so will void any and all warranties.**

### DYE TRANSFER DISCLAIMER

Certain clothing and accessory dyes (such as those used on denim jeans) may migrate to lighter colors. This phenomenon is increased by humidity and temperature and is irreversible. Mayer Fabrics will not assume responsibility for dye transfer caused by external contaminants. Please check compatibility when using this product in combination with painted or varnished surfaces.

### ADDITIONAL INFORMATION

^ Abrasion test results exceeding ACT Performance Guidelines are not an indicator of product lifespan. Multiple factors affect fabric durability and appearance retention.

Warranty: Please refer to the Mayer website for warranty information by pattern.

Custom Colors: All patterns can be custom colored. Minimum yardage applies.

Digital Swatch Card Color Matching: Due to color variations on different monitors and color printers, actual swatch colors may vary slightly. Please request a memo sample from Mayer Fabrics to ensure proper color representation.

Complete and current product information available at [mayerfabrics.com](http://mayerfabrics.com).



These fabrics meet or exceed these ACT performance guidelines.  
\*Certification Marks owned by ACT®

©2021  
CC11CD MF0721



T 800.428.4415      [mayerfabrics.com](http://mayerfabrics.com)  
500 S. Kitley Ave. Indianapolis, IN 46219