



DETAILS & MATERIALS

WOOD FINISHES & LAMINATES

OAK



NATURAL NOO

Laminate Match
Formica 7152-58 Northern Oak



SOLAR SOO

Laminate Match
Formica 346-58 Natural Oak



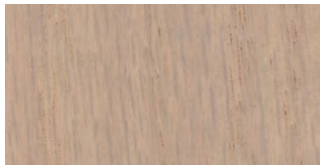
LIGHT LOO

Customer Choice Laminate



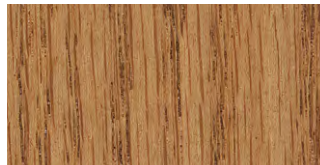
AUTUMN AOO

Laminate Match
Wilsonart 7816-60 Solar Oak



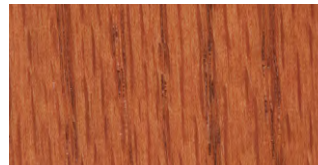
GREY GOO

Customer Choice Laminate



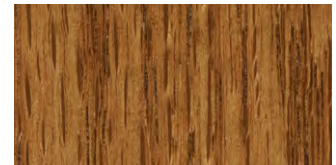
PECAN POO

Laminate Match
Pionite W0581 Wisconsin Oak



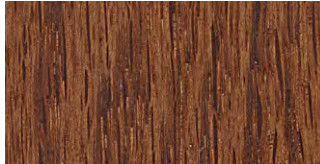
MEDIUM CHERRY MCO

Laminate Match
Nevamar WC5581N Blossom



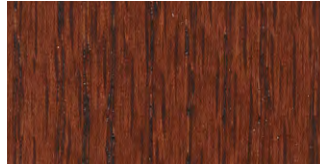
MEDIUM WALNUT MWO

Laminate Match
Wilsonart 7885K-78 English Oak



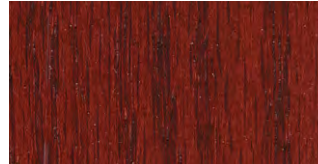
ENGLISH EOO

Laminate Match
Wilsonart 7957K-78 Zanzibar



WINDSOR MAHOGANY WMO

Laminate Match
Formica 7583-58 Victorian



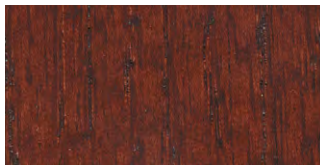
CHERRY CHO

Customer Choice Laminate



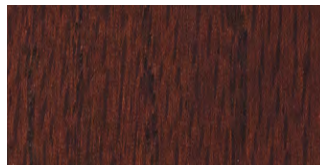
CORDOVAN COO

Customer Choice Laminate



MAHOGANY MAO

Laminate Match
Wilsonart 7040K-78 Figured



IMITATION WALNUT IWO

Laminate Match
Formica 6209-43 Prestige Walnut

STANDARD FINISH

Our standard wood finishes are represented. These printed samples closely represent our standard colors. Please contact Customer Service for actual wood finish samples.

CUSTOM FINISHES

We will make every effort to accurately match your custom finish sample. Please contact Customer Service for a custom finish match as there may be additional manufacturing charges to be added to the standard development fee of \$100 net per match. Due to limitations of some wood species, we reserve the right to decline requests. Wood owes its inherent beauty to variations in color, graining, and texture

in its natural state. In our finishing process, we attempt to accent this beauty rather than subdue it. Consequently, the chairs you receive may not be a perfect color match to a sample. Similarly, there may be minor variations in color from one chair to the next even though they are finished at the same time.

HIGH PRESSURE LAMINATES (HPL'S)

Jasper Chair's table collections feature HPL top options. Reference the swatches for a complementary HPL match. For critical or specific color representation, contact Customer Service for an actual HPL sample.

MAPLE



NATURAL NMM
Laminate Match
Wilsonart 7909-60 Fusion Maple



SPICE SMM
Laminate Match
Formica 7284-58 Figured Annigre



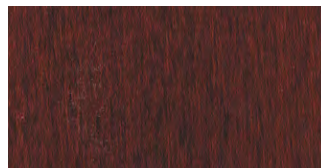
MEDIUM CHERRY MCM
Laminate Match
Formica 5904-43 Wild Cherry



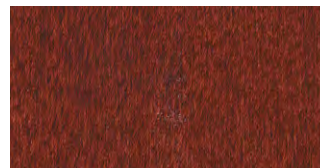
MEDIUM WALNUT MWM
Customer Choice Laminate



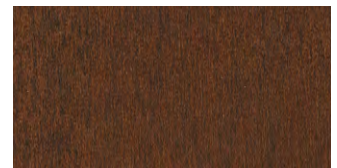
NUTMEG NUM
Laminate Match
Pionite WC331-H Victorian Cherry



MAHOGANY MAM
Laminate Match
Wilsonart 7122K-07 Empire



CHERRY CHM
Customer Choice Laminate



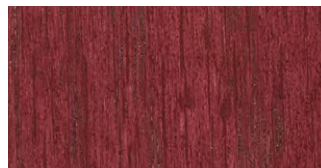
IMITATION WALNUT IWM
Laminate Match
Wilsonart 7942K-07 Cocobala

COLOR

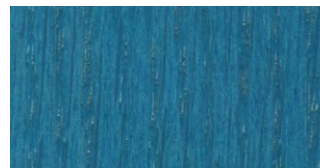
(ADD \$20 LIST PER ITEM)



LEMON LEO



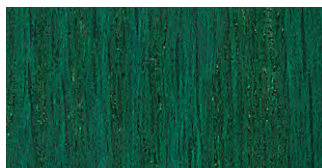
GRAPE GRO



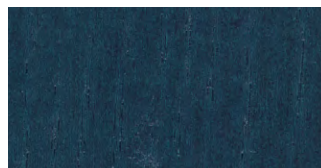
SKY BLUE SBO



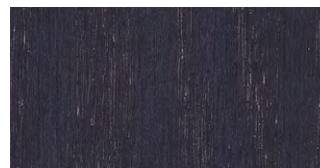
FLAME RED FRO



EMERALD EMO



DARK BLUE DBO



VIOLET VIO



EBONY EBO

FABRIC PROGRAM

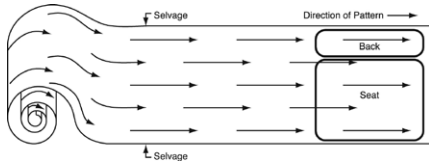
Jasper Chair's Fabric Program offers a selection of fabrics in a wide array of patterns and colors to accommodate a variety of applications. From durable fabrics to withstand the rigors of schools and universities, to easy-to-clean fabrics for restaurant and hospitality use, to protective upholsteries suitable for healthcare, Jasper Chair will have upholstery to fit the need.

A variety of fabrics are shown on Jasper Chair's swatch cards. Larger memo samples are available by contacting the fabric manufacturer direct.

All product includes the cost of applied fabric using Jasper Chair's Fabric Program and grade structure. These fabrics are classified or priced in grades ranging from grade 200 (lowest) to grade 700 (highest). If two graded fabrics are to be applied to the same frame, pricing will be based on the higher of the two grades.

Published yardage is based on a solid 54" wide fabric. In some cases, the pattern or repeat will require additional yardage. Please contact Customer Service to help estimate yardage requirements, toll free: 866-891-8289.

Unless the customer indicates, all fabrics will be customarily applied in a railroad manner (or off the roll in a horizontal fashion) as shown.



If the fabric should be applied in a different manner or up the roll, please indicate on your purchase order. Please be aware that additional costs and additional yardage may arise from applying the fabric other than the customary direction.

Cut yardage is available for purchase. Should a customer require to purchase cut yardage, refer to the following table for pricing.

- Grade 200, \$77 per yard list
- Grade 300, \$113 per yard list
- Grade 400, \$147 per yard list
- Grade 500, \$186 per yard list
- Grade 600, \$225 per yard list
- Grade 700, \$266 per yard list

Jasper Chair partners with multiple upholstery vendors to offer graded-in fabrics for ordering ease. These are listed on the following pages. For more information and to order memo samples please contact vendors direct.

ARC COM
arc-com.com
800-223-5466

CF STINSON
cfstinson.com
800-841-6279

DOUGLAS
douglassfabrics.com
800-950-3684

MAYER
mayerfabrics.com
800-428-4415

BURCH
birchfabrics.com
800-841-8111

CAMIRA
camirafabrics.com
800-288-0655

MAHARAM
maharam.com
800-645-3943

MOMENTUM
themomgroup.com
800-366-6839

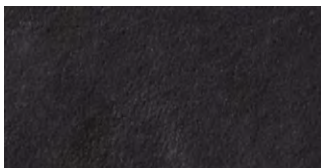
FIRE RETARDANCY

All Jasper Chair products are manufactured to comply with California TB 117 as a minimum standard. Compliance with more stringent codes requires special manufacturing considerations and possible up-charges.

For California TB 133 we use either barrier material between the fire retardant fabric and foam cushioning or a fire retardant fabric and foam in order to comply with California TB 133. Some product designs and fabrics cannot be combined to comply with California TB 133. Because of this, we reserve the right to reject any request for a fabric, including C.O.M., or product style that may compromise the integrity or safety of a product specified to comply with California TB 133. Please contact Customer Service for pricing and availability to comply with California TB 133.

STANDARD LEATHER

The leathers shown are thicker material selected for woven backrests; they are not ideal for standard upholstery application.



BLACK BL



BURGUNDY BU



BROWN BR



TAN TA

CUSTOMER'S OWN MATERIAL

Jasper Chair accommodates Customer's Own Material (COM) requests. COM orders must meet quantity requirements for adequate yardage as well as performance requirements to avoid wear and defects and satisfy aesthetic expectations on Jasper Chair products.

When selecting a fabric please be aware that some fabrics may not tailor well due to their characteristics. Jasper Chair cannot assume responsibility for the tailoring quality of some fabrics or for the receipt of defective materials.

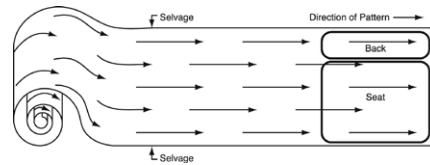
When specifying COM, refer to Grade 200/COM pricing grades.

All COM orders must be accompanied by Jasper Chair's COM form to expedite the order, indicating fabric details and application instruction. All COM orders should be shipped to:

Jasper Chair
Receiving Department
534 East 8th Street
Jasper, Indiana 47547

Yardage published is based on a solid 54" wide fabric. In some cases, the COM pattern or textile width will require additional yardage. Please contact our Customer Service to help estimate yardage requirements, toll free: 866-891-8289.

Unless otherwise noted, all fabrics will be applied in a railroad manner (or off the roll in a horizontal fashion) as shown. It is very important for the customer to indicate upholstery preferences on the COM form to achieve the desired look when submitting a COM order. Please be aware that additional costs and additional yardage may arise from applying the fabric other than the customary direction.



Listed yardage requirements are based on 54" wide fabric. For fabrics less than 54" wide, or those requiring matched upholstery such as large patterns, prints, stripes, etc., additional yardage will be required based on style and quantity ordered. The below chart is a general guide to estimating yardage:

Fabric width	Plain	Under 7" repeat	7"-13" repeat	14"-21" repeat	22"-27" repeat	27"+ repeat
54"	0	15%	20%	25%	30%	40%
51"-53"	10%	25%	30%	35%	40%	50%
48"-50"	15%	30%	35%	40%	45%	55%
45"-47"	30%	45%	50%	55%	60%	70%
36"-44"	50%	65%	70%	75%	80%	90%

COM FORM

All COM orders must be accompanied by Jasper Chair's COM form to expedite the order, indicating fabric details and application instruction. All COM orders ship to:

Jasper Chair
Receiving Department
534 East 8th Street
Jasper, Indiana 47547

Customer Name

Purchase Order Number

Address

City, State, Zip

Fabric Manufacturer

Fabric Pattern Name / Color Name

Pattern Instructions (indicate which direction the fabric is to be applied). Circle one:



Off the roll, railroaded



Up the roll

Comments / Notes

FABRIC PROGRAM

Fabrics listed may have been discontinued or price changed since publishing.

BURCH

801.....200	Drift.....300	Megabyte.....400	Segment.....300	Austen.....400
Abstract.....400	Dwell.....300	Melody.....400	Shibori.....500	Beckett.....400
Abbyss.....500	Edit.....300	Mercer.....200	Shockwave.....600	Capote.....400
Access.....400	Elevate.....500	Method.....200	Show Time.....200	Clarke.....400
Adorn.....300	Embellish.....300	Metric.....200	Shuffle.....400	Element.....400
Alias.....400	Encore.....400	Microchip.....400	Sidestep.....500	Elite.....300
Align.....300	Entwine.....300	Milano.....400	Social.....300	Equator.....400
Amenity.....400	Escape.....300	Milestone.....300	Sonic.....300	Flicker.....400
Amplify.....500	Essay.....400	Mission.....300	Spellbound.....400	Footnote.....400
Analog.....400	Essence.....300	Mixtape.....400	Spotlight.....300	Graffiti.....400
Annex.....400	Evolve.....300	Mohair.....400	Sprint.....300	Hawthorne.....400
Anthem.....400	Excursion.....400	Motley.....600	Sprout.....300	Hemingway.....400
Apex.....400	Fast Track.....300	Nimbus.....500	Stage.....300	Huxley.....400
Argyle.....200	Felt.....400	Nonstop.....400	Stamp.....300	Index.....400
Atoll.....500	Fiction.....400	Optic.....500	Stanza.....300	Journal.....400
Badge.....300	Filter.....400	Opus.....500	Stride.....300	Kipling.....400
Barcode.....400	Finesse.....200	Orbit.....300	Structure.....300	Link.....400
Basis.....200	Firewall.....400	Origami.....500	Study.....400	Memoir.....400
Beacon.....400	First Class.....400	Outline.....400	Suite.....400	Mylar.....400
Beeline.....300	Flannel.....400	Ozone.....400	Summit.....400	Odyssey.....400
Bespoke.....500	Fleece.....400	Palette.....400	Surge.....300	Parker.....400
Beta.....400	Flint.....200	Parallel.....300	Surplus.....500	Patina.....400
Bevel.....500	Flora.....300	Pashmina.....300	Switchback.....500	Salinger.....400
Blade.....300	Focal Point.....300	Passage.....400	Syllabus.....400	Script.....400
Bloom.....500	Folio.....400	Pathway.....400	Sync.....400	Tolsory.....400
Blur.....500	Formation.....200	Peace.....300	Tabloid.....400	Vellum.....400
Boutique.....400	Freeze Frame.....400	Peak.....400	Tagline.....400	Verve.....300
Branch Out.....300	Frenzy.....300	Pigment.....400	Tangle.....300	Wilde.....400
Breeze.....300	Fusion.....400	Piñata.....500	Tempo.....300	
Brink.....400	Gabardine.....200	Pindot.....300	Terrazzo.....500	VINYL
Brush Stroke.....400	Gala.....500	Pipeline.....400	Tether.....300	Accord.....300
Bungalow.....300	Generation.....300	Playa.....500	Theory.....200	Alchemy.....300
Buzzword.....300	Glamour.....400	Plaza.....400	Thrive.....300	All American.....300
Candid.....500	Graph.....400	Plush.....400	Tint.....400	Allante.....300
Canteen.....500	Grove.....300	Portfolio.....400	Toggle.....400	Allante Touch.....300
Caption.....300	Guru.....300	Portico.....500	Tower.....400	Allegro.....200
Cashmere.....300	Haiku.....400	Portrait.....400	Trek.....400	Alloy.....300
Chalet.....300	Headline.....300	Prestige.....400	Triad.....300	Allure.....300
Chambray.....200	Hearth.....300	Principle.....200	Trilogy.....400	Bandwidth.....300
Chime.....300	Homestead.....400	Profile.....200	Tumble.....300	Berwick Tweed.....300
Chord.....300	Hue.....400	Proof.....300	Turnaround.....300	Bondi.....200
Chorus.....400	Hybrid.....300	Propel.....500	Tweed.....400	Bourbon Street.....300
Chroma.....400	Ignite.....500	Prototype.....400	Upstream.....500	Bramble.....300
Chronicle.....400	Imperial.....400	Puzzle.....300	Uptown.....400	Bronte.....200
Circa.....300	Infinity.....400	Quadrant.....300	Utopia.....600	Burkshire.....300
Cityscape.....500	Ion.....400	Quantum.....500	Valet.....400	Canyon.....200
Column.....300	Jamboree.....300	Quest.....300	Velour.....400	Carrara.....300
Connection.....400	Jitterbug.....400	Radiant.....400	Verge.....400	Casablanca.....300
Cottage.....400	Junction.....400	Reed.....500	Viewpoint.....400	Celebration.....400
Course.....400	Key.....300	Regis.....400	Villa.....300	Centerpoint.....500
Cove.....400	Kimono.....400	Reserve.....400	Vine.....300	Chambray.....300
Crisscross.....500	Kindred.....400	Retreat.....300	Virtual.....400	Chamea II.....300
Crush.....400	Knot.....400	Ricochet.....400	Voyage.....300	Classic.....300
Curio.....500	Lattice.....300	Riddle.....500	Wabi Sabi.....400	Clique.....300
Cutting Edge.....300	Launch.....300	Rise.....300	Waldorf.....400	Clutch.....400
Dapper.....300	Limelight.....300	Roam.....300	Watercolor.....600	Colorguard.....300
Davenport.....400	Linen.....400	Roundabout.....400	Windsor.....500	Connect.....300
Decade.....300	Livewire.....300	Runway.....500	Woolen.....500	Contempora.....200
Degree.....400	Lodge.....400	Rush hour.....400	Zest.....300	Cornerstone.....300
Demo.....400	Lyric.....300	Savvy.....300	Zoom.....400	Crosshatch.....300
Digital.....400	Mandalay.....500	Scale.....400		Dimension (Nassimi).....400
Draft.....300	Mantra.....400	Scout.....300	POLYURETHANE	Ditto.....400
Drama.....300	Meander.....500	Scramble.....300		Dolphin.....200

BURCH, CONTINUED

Enchanted	300	Promise.....	300
Endurance.....	300	Quill	200
English Pub.....	300	Quilted	400
Engrave.....	400	Rattan.....	300
Espirt	200	Reflex.....	300
Expressions.....	300	Refresh	300
Flare.....	400	Renaissance	300
Focus	400	Reptile	200
Fortress	300	Rivet.....	300
Foundation.....	300	Rogue II.....	300
Full Circle.....	500	San Remo.....	300
Genesis	300	Seduction.....	300
Gilded	300	Silvertex.....	300
Glaze	300	Soho.....	200
Grand Sierra.....	300	Spirit Millennium	300
Grand Vista.....	300	Sta-soft	300
Guardian	300	Stratosphere	300
Guideline	300	Stucco.....	300
Heidi	200	Surfside/Stratford.....	300
Heidi Soft.....	200	Surrey.....	300
Heritage (Nassimi).....	300	Synchronicity.....	300
Heritage (Omnova).....	300	Token.....	400
Hitch.....	300	Traveler.....	300
Impression.....	400	Twist.....	300
Independence.....	200	Universal	200
Interlace	400	Vector.....	300
Invision	300	Venue	300
Islander.....	200	Vibe	200
Kaleidoscope	400	Vintage	300
Kimono	300	Virtue.....	300
Kinetic.....	500	Vista.....	300
Landscape.....	300	Vivo.....	300
Liberty.....	200	Whisper.....	300
Maglia.....	400	Wicker.....	300
Margin	400	Wired.....	300
Maverick.....	300	Wish	300
Mimic.....	300	Wonder.....	300
Monticello.....	200	Zodiac.....	300
Motive.....	300	SILICONE	
Mulberry.....	500	Envision.....	600
Muse	300	Meridian	600
Natural Linen	300		
Natural Movements...	300		
Nauga Leather	300		
Nauga Soft.....	300		
Naugaform.....	400		
Naugahyde CP 1967 ..	300		
Naugasylk.....	300		
Navigator.....	200		
Neochrome III.....	300		
Nexus.....	300		
Origin	300		
Outback.....	300		
Oxen(Nassimi/Sprad)	200		
Oxen (Naugahyde).....	200		
Parquet.....	400		
Patriot	300		
Persuasion	200		
Phoenix	300		
Pioneer.....	300		
Polished.....	300		
Prizm.....	200		
Prodigy.....	200		

FABRIC PROGRAM

Fabrics listed may have been discontinued or price changed since publishing.

CF STINSON

Ace.....300	Flex.....400	Pergola.....500	Vapor.....600	Raffia.....400
Acrobat.....600	Flight.....600	Perimeter.....400	Velocity.....500	Rainier.....300
Adagio.....500	Flip Flops.....600	Piccadilly.....500	Voltage.....600	Rally.....200
Adirondack.....600	Folio.....600	Pierce.....300	Whirl.....600	Rialto.....300
Aero.....400	Fractal.....600	Pinball.....500	Wish.....Call	Rogue II.....200
Alfresco.....500	Full Turn.....600	Pivot.....300	Zoom.....500	Scout.....300
Alignment.....600	Furrows.....300	Polka.....300		Script.....300
Anagram.....500	Gesture.....Call	Portico.....400	VINYL & NON PVC	Sentry HC.....300
Armature.....600	Gradation.....400	Posey.....500	Amplify.....200	Shantung.....300
Artisan.....300	Gravity.....500	Posh.....400	Apex Crypton Revl.....400	Sirocco.....600
Basket.....700	Handwork.....500	Power Grid.....500	Ardent.....300	Sleek.....300
Bass Line.....600	Happy Tappy.....700	Profile.....300	Atlas.....200	Smile.....600
Beatbox.....500	Haven.....500	Progression.....500	Avant.....300	Smoothie.....300
Bespoke.....400	Helix.....600	Queue.....600	Bambu-EnVi.....500	Spirit Millennium.....300
Blip.....300	Hexie.....700	Raquette.....500	Bistro.....300	Stat-Con.....500
Bliss.....700	Hi-Fi.....300	Realm.....400	Budget Black.....200	Stitch in Time.....300
Block Party.....600	Highlight.....300	Recharge w/Celliant...600	Burkshire.....300	Strand.....300
Bloom.....Call	Hive.....300	Refraction.....300	Carlisle.....300	Stride.....300
Bongo.....600	Hot Spot.....500	Retrograde.....300	Cassablanca.....600	Symphony Classic.....300
Boomerang.....600	Hush.....600	Revolution.....500	Cassidy.....300	Tendrill.....300
Boost w/Celliant.....600	I Spy.....600	Riddle.....300	Catalyst.....300	Tessuto.....300
Borderline.....600	Infinity Plush.....700	Ritz.....500	Channel.....300	Vegas.....300
Breton.....600	Inside Track.....300	Salinas.....700	Chroma.....400	Walk the Line.....600
Brilliant.....300	Jambi Stripe.....500	San Simeon.....700	Cirque.....400	Whisper.....300
Brixton.....600	Jillian.....300	Satellite.....400	Citadel.....300	Ziggy.....300
Broadband.....600	Kennebunk.....600	Season.....700	Clean Slate.....300	Zodiac.....300
Brushwork.....600	Kinetic.....500	Semaphore.....400	Colorguard.....200	
Bryant Park.....300	Knock Knock.....700	Sensor.....600	Connect.....300	NON PVC
Calibration.....600	Knot.....500	Sequence.....300	Core.....200	Arioso.....500
Cannon Beach.....700	Lateral.....300	Serene.....700	Criss Cross.....300	Camino.....Call
Catalina.....600	Lifecycle.....600	Shift.....300	Diva.....300	Chaos.....700
Celeste.....500	Lift.....600	Shimmy.....400	Dodgeball.....600	Cielo.....Call
Charlotte.....300	Luster.....500	Shuffle.....Call	English Pub.....300	Corium.....500
Cinema.....600	Manchester.....400	Sideline.....400	Essential.....200	Dakota.....300
Circulate w/Celliant...600	Mandala.....500	Silver Point.....600	Expressions.....300	Didi.....500
Cirro.....600	Mantra.....700	Sleeping Bear Dunes..600	Fizz.....300	Effervascense.....600
Coco.....500	Marimba.....500	Splice.....700	Flanders.....300	Etch.....500
Colden.....600	Marquetry.....600	Sprint.....300	Frequency.....500	Fiberdrill.....500
Color Block.....600	Maxwell.....300	Square One.....300	Fuse.....200	Galileo.....500
Comeback.....600	Maze.....600	Squire.....500	GeoMet.....400	Glisten.....Call
Concentric.....600	Migration.....700	Stellar.....400	Grand Sierra.....300	Impress w/StakKleen..500
Continuum.....400	Mingle.....600	Steppe.....600	Grille.....300	Kid.....500
Converge.....600	Moby.....300	Storyboard.....700	Hopsack.....300	Mesa.....Call
Cordie.....700	Mod.....600	Stuff.....Call	Kilkenny Tweed.....300	Modena.....500
Cottonwood.....600	Modernist.....700	Summit.....500	Kusari.....300	Moxie.....500
Current.....600	Monhegan.....600	Sunburst.....600	Lara.....200	Sedona.....Call
Dart.....300	Montage.....400	Supersilliness.....700	Laredo.....200	Silicone-Avail.....600
Deflection.....500	Multiply.....700	Swipe.....600	Level.....400	Silicone-Downtown....700
Detail.....600	Nest.....600	Swivel.....600	Loophole.....400	Silicone-Max ONE.....700
Division.....400	Network.....500	Symmetry.....600	Matrix.....500	Silicone-Uptown.....700
Donegal.....500	New Hempstead.....300	Sync.....700	Mica.....300	Solitaire.....300
Drift.....500	Nimble.....500	Tangram.....500	Moccasin.....300	Staple.....300
Drizzle.....700	Nova.....400	Thrive.....700	Montana.....300	Sundance w/StaKleen400
Duet.....500	Obscura.....400	Tidbit.....500	Natural World.....600	Tender.....Call
Eddy.....700	Offset.....600	Torus.....500	Naugaleather.....300	Volterra-HC.....Call
Elderberry.....600	Olivia.....300	Touchbase.....400	Naugasoft.....200	Wyatt.....400
Enhance w/Celliant....600	Outlander.....300	Tranquility.....600	Neochorme III.....300	
Equinox.....500	Pacifica.....600	Transcend.....300	Nishiki.....300	CLODAGH
Euclid.....300	Paloma.....400	Tribeca.....300	Orbit.....300	Deza.....600
Fast Lane.....300	Paradox.....600	Trio.....600	Overlay.....400	Jala.....700
Fenestra.....600	Park Avenue.....600	Tweed.....500	Oxford.....300	
Figment.....600	Passport.....500	Twiggy.....500	Patriot Plus II.....300	MICHAEL GRAVES
Fleck.....300	Penelope.....500	Vanish.....600	Promenade.....500	Grove.....600

CF STINSON, CONTINUED

PATTY MADDEN	
Lucent.....	700
Radiance.....	700

ROBERT STERN	
Acanthus.....	500
Cyma.....	500
Scintillate.....	600
Stratford.....	Call
Tessellate.....	600

MICHAEL GRAVES VINYL	
Entrada.....	400
Excursion.....	300
Latitude.....	300
Valise.....	200

PATTY MADDEN VINYL	
Affinity.....	600
Banyan.....	500
Bari.....	600
Bubblersake.....	600
Chainite.....	600
Eli.....	500
Hashtag.....	500
Juxy.....	600
Lava.....	600
Live Wire.....	600
Martini.....	600
Median.....	600
Olympus.....	600
Perspective.....	600
Plexus.....	500
Prisma.....	500
Raya.....	600
Revolve.....	600
Ripple.....	600
Rivera.....	500
Seta.....	600
Slightwave.....	500
Twist.....	600
Vortexia.....	600
Waterwand.....	600
Wicker.....	600
Winnly.....	400
Ybor.....	500

GENUINE LEATHER	
R.E.I.L.....	Call

CAMIRA

24/7.....	500
Aquarius.....	400
Armadillo.....	600
Blazer.....	500
Blazer Lite.....	400
Canopy.....	300
Carlow.....	200
Chicago.....	300
Code.....	600
Craggan.....	600
Ebb.....	300
Era.....	300
Era 66.....	300
Flow.....	300
Gravity.....	300
Halcyon Aspen.....	500
Halcyon Blossom.....	500
Halcyon Cedar.....	500
Halcyon Linden.....	500
Halcyon Poplar.....	500
Haven.....	300
Hebden.....	600
Hemp.....	500
Honeycomb.....	400
Individuo.....	500
Landscape Balance.....	500
Landscape Contact.....	500
Lucia.....	300
Main Line Flax.....	500
Main Line Flax Stripe.....	500
Manhattan.....	300
Nettle Aztec.....	600
Nettle Nomad.....	600
Nettle Traveller.....	600
Nexus.....	300
Oxygen.....	400
Patina.....	400
Racer.....	300
Rivet.....	300
Silk.....	600
Sonus.....	300
Sonus Etch.....	400
Sprint.....	300
Stripes.....	600
Synergy.....	500
Synergy 66.....	500
Synergy Quilts.....	600
Touch.....	400
Track.....	500
Trail.....	500
Vintage.....	Call
Yoredale.....	600
Zap.....	600
Zig Zag.....	600

FABRIC PROGRAM

Fabrics listed may have been discontinued or price changed since publishing.

DOUGLASS

A La Mode.....400	Carlyle.....300	Edgy.....300	Hamlet.....200	Natty.....300
Abacus.....300	Carriage House.....500	Electricity.....200	Hancock.....200	Newel.....400
Acacia.....300	Cartwheel.....300	Electron.....200	Happenstance.....300	Newton.....300
Acadia.....300	Castellani.....300	Elite.....200	Harvard.....200	Nia.....300
Accessory.....300	Cavalcade.....400	Embassy.....200	Haze.....400	Nouvelle.....400
Adams.....200	Cavort.....400	Embellish.....200	Helena.....400	Novel.....200
Adore.....300	Celeste.....300	Emcee.....200	Henry.....200	Numbers.....300
Alfresco.....300	Centrum.....300	Endwise.....400	Herati.....400	Nuru.....300
Allure.....200	Chain Dot.....200	Energize.....200	Hewitt.....200	Ogee.....400
Amazement.....200	Chakra.....400	Enigma.....200	Hijinks.....400	OM.....400
Amherst.....200	Chalet.....300	Entice.....200	Homestead.....400	Oni.....300
Applique.....300	Chamberlin.....400	Entwined.....400	Hoopla.....400	Optima.....300
Arbor.....300	Chance.....300	Envy.....200	Icon.....200	Origami.....400
Archetype.....200	Chariot.....300	Equal.....300	Iggy.....300	Orsay.....300
Arrondi.....300	Charleston.....400	Escapade.....200	Impromptu.....200	Paddle.....300
Asana.....400	Charlotte.....300	Escort.....200	Incense.....400	Pagoda.....300
Ashbury.....300	Charm.....300	Essence.....300	India.....400	Palais.....400
Astute.....300	Chartes.....400	Eternity.....200	Jambo.....300	Palmer.....300
Atelier.....400	Chateaux.....400	Excel.....200	Jaunty.....300	Palmyra.....300
Austin.....300	Chatter.....300	Exemplar.....200	Jolie.....400	Pantheon.....200
Axl.....300	Chi Chi.....300	Extreme.....200	Joseph.....200	Papiro.....300
Backgammon.....300	Chiaro.....400	Fable.....300	Keen.....300	Parade.....400
Bainbridge.....300	Chronicle.....300	Fanatic.....200	Kelso.....300	Parallel.....200
Balance.....200	Cicely.....300	Fascination.....200	Kilim.....400	Parasail.....200
Bandeau.....300	Circuit.....200	Fete.....400	Kirby.....300	Parkside.....300
Banter.....400	Cirque.....300	Fidget.....300	Kismet.....300	Parliament.....200
Baskersville.....300	Clapham.....300	Fiesta.....400	Kyoto.....400	Parlour.....200
Baslow.....400	Clove.....300	Fisher.....300	La Boheme.....300	Pasadena.....300
Baste.....300	Club House.....500	Fissure.....300	Lair.....300	Passion.....200
Bauble.....300	Codger.....300	Fizz.....200	Lascia.....400	Pembroke.....300
Bemberg.....300	Cohansey.....200	Flagstaff.....300	Lavish.....300	Pendulum.....200
Bendal.....300	Columbia.....200	Flash.....400	Leaf.....400	Penobscot.....300
Bento.....400	Compass.....300	Fling.....200	Linden.....200	Pentagon.....200
Bergama.....400	Confetti.....300	Flip.....200	Linea.....300	Pentel.....300
Berkeley.....200	Converge.....300	Florida Straits.....200	Link.....200	Pepperell.....300
Berman.....300	Cornell.....200	Flounce.....300	Lodge.....400	Persia.....400
Beyond.....200	Courage.....200	Flower Power.....300	Loft.....400	Petroglyph.....300
Bimini.....200	Craftsman.....400	Flutter.....200	Loopy.....200	Piazza.....200
Biscayne.....300	Craze.....300	Forage.....300	Lush.....300	Picotage.....300
Bisous.....400	Crisscross.....300	Fortune.....300	Malino.....400	Pied A Terre.....400
Boat House.....400	Crossroads.....400	Fountain.....400	Manga.....400	Pilot.....200
Bon Vivant.....300	Curvaceous.....300	Foxy.....300	Manor.....200	Pincurl.....400
Bongani.....300	Cycle.....200	Frequent.....200	Marigold.....400	Pinnacle.....300
Botswana.....300	Dainty.....300	Frolic.....200	Marisal.....400	Plantation.....300
Boulevard.....400	Dapper.....300	Frou Frou.....400	Marvel.....200	Pleat.....300
Bounce.....200	Dartmouth.....200	Funfair.....400	Mayfair.....300	Pocasset.....300
Bowie.....300	Dayo.....300	Fuse.....300	Maze.....200	Pocomo.....300
Branchport.....300	Deck House.....400	Gameboard.....400	Mead.....300	Pomona.....300
Branco.....200	Del Mar.....200	Gamut.....300	Mercer.....300	Ponder.....300
Brisk.....300	Deluxe.....300	Gauge.....200	Merry.....400	Ponset.....300
Bundle.....300	Denali.....400	Geode.....300	Mesa.....300	Portland.....300
Bungalow.....400	Desert.....300	Gizmo.....300	Metamorphic.....300	Prance.....400
Bungee.....400	Destiny.....300	Glacial.....300	Millefleur.....400	Precedent.....200
Burbank.....300	Domaine.....300	Glee.....200	Mombasa.....300	Pressed Leaves.....400
Cabo.....200	Drama.....200	Glide.....200	Monolith.....300	Preston.....300
Caboodle.....300	Dreamy.....200	Glint.....300	Montmartre.....400	Primary.....200
Caboose.....400	Droplet.....300	Gorge.....300	Moulin.....400	Princeton.....200
Calibrate.....200	Duke.....200	Grace.....300	Moxie.....300	Prisma.....300
Calm.....300	Duma.....300	Gradient.....200	Mungo.....300	Provincial.....200
Canal.....300	Duplex.....300	Green House.....400	Mural.....300	Prudential.....300
Canopy.....300	Durango.....400	Greta.....300	Nairobi.....300	Pysche.....300
Canson.....300	Echelon.....200	Guild.....300	Namaste.....400	Purdue.....200
Cape Cod.....400	Echo.....200	Haiku.....400	Nara.....400	Puzzle.....300

DOUGLAS

Rabanna.....	400	Spartan.....	200	Tweed.....	300	Capote.....	400	Invision.....	300
Rally.....	300	Spencer.....	300	Twinkle.....	300	Casablanca.....	300	Invision Neo.....	300
Ramble.....	400	Spiral.....	400	Twirl.....	300	Caso.....	200	Kaleidoscope.....	300
Random.....	400	Spirograph.....	400	Twist.....	200	Chadwick.....	200	Kilkenny Tweed.....	300
Rappel.....	200	Spot.....	400	Twitter.....	200	Chainmaille.....	300	Kiln.....	300
Razor.....	300	Spout.....	200	Usher.....	200	Chaise.....	400	Kimono.....	300
Reality.....	200	Sprite.....	400	Utley.....	300	Chambray.....	300	Latch.....	300
Recoil.....	400	Squire.....	200	Utmost.....	200	Chamea II.....	200	Luxe.....	300
Refined.....	400	St. Germain.....	400	Utopia.....	200	Circus.....	400	Maestoso.....	300
Reflection.....	400	Stacatto.....	200	Valle.....	300	Clarke.....	400	Maglia.....	300
Reflex.....	400	Stargaze.....	300	Vanguard.....	300	Claudet.....	400	Manco.....	300
Reticulate.....	400	Starlet.....	200	Versa.....	200	Clutch.....	300	Marble.....	300
Rappel.....	400	Static.....	400	Video.....	200	Colorguard.....	200	Marblestone.....	300
Revere.....	200	Stencil.....	400	Viletta.....	300	Connect.....	200	Minuet.....	300
Reversal.....	400	Straightaway.....	300	Vinea.....	400	Cosmopolitan.....	300	Mirage.....	300
Rhumba.....	200	Strathmore.....	300	Visa.....	400	Courbet.....	400	Morey.....	300
Rhythm.....	400	Stryker.....	300	Volute.....	300	Crafted Grids.....	300	Morisot.....	400
Rickshaw.....	400	Stylish.....	300	Volute FR.....	300	Curio.....	200	Muse.....	300
Riddle.....	300	Suave.....	400	Wayfare.....	300	Dauntless.....	200	Natural Linen.....	200
Rima.....	300	Suedegard.....	300	Wellesley.....	200	Deville.....	400	Nauga Soft.....	200
Ring.....	200	Summer House.....	500	Wiggle.....	400	Dimension.....	300	NaugaLeather.....	300
Rio.....	400	Sunshade.....	300	Windfall.....	300	Discover.....	200	Neochrome II.....	300
Ritzzy.....	300	Supreme.....	200	Wink.....	300	Dolce.....	300	New Duration.....	300
Rive Gauche.....	400	Surreal.....	200	Wish.....	400	Dumont.....	400	Palm Harbor.....	300
Rolo.....	300	Swahili.....	300	Witty.....	300	Easel.....	200	Paris.....	300
Romance.....	400	Swank.....	300	Woodland.....	200	Edgeline.....	300	Patriot Plus.....	200
Romp.....	400	Swarthmore.....	200	Yale.....	200	Eel.....	300	Pearlized.....	600
Roundabout.....	300	Swing.....	300	Yara.....	300	Elm.....	300	Persuasion.....	200
Row.....	300	Swish.....	300	Yoga.....	400	Emboss.....	200	Phoenix.....	200
Runway.....	200	Switch.....	200	Zanzibar.....	200	English Pub.....	300	Plait.....	200
Sachet.....	300	Swizzle.....	300	Zappa.....	300	Excaliber.....	200	Polo.....	300
Sandal.....	400	Sylvia.....	300	Zing.....	200	Expressions.....	300	Primera.....	500
Sarong.....	400	Taboret.....	300	Zip Line.....	200	Ezy Corinthian.....	200	Promessa.....	700
Sassy.....	300	Tadala.....	300	Zola.....	300	Ezy Elk.....	200	Promise.....	300
Satellite.....	300	Tailor Made.....	300			Ezy Heidi.....	200	Reflex.....	300
Savile.....	300	Taj.....	400	VINYL		Ezy Madrid.....	200	Reflex Neo.....	300
Scoop.....	300	Tamu.....	300	A Capalla.....	300	Ezy Monticello.....	200	Renaissance.....	300
Score.....	400	Tangle.....	300	All-American.....	200	Ezy Oxen.....	200	Renaissance Neo.....	300
Scree.....	300	Tanner Stripe.....	400	Allante.....	200	Ezy Sierra.....	200	Render.....	200
Sendal.....	300	Tanzania.....	300	Arc.....	300	Ezy Wallaby.....	200	Repertoire.....	300
Serendipity.....	300	Taper.....	300	Ardor.....	400	Faber.....	300	Rialto.....	300
Shawl.....	400	Tartaine.....	200	Aristo.....	300	Ferris.....	300	Riviera.....	300
Shenandoah.....	300	Tatami.....	400	Arturo.....	300	Flair.....	300	Rouge II.....	200
Sherpa.....	200	Tea Leaves.....	300	Aura.....	400	Fleck.....	200	Salinger.....	400
Shiatsu.....	300	Tembo.....	300	Ballistic.....	400	Flume.....	300	San Remo.....	300
Shindig.....	200	Temple.....	200	Bally.....	400	Foundation.....	200	Savanna.....	200
Shire.....	200	Tempt.....	300	Baron.....	400	Funhouse.....	300	Scandia.....	200
Shoji.....	400	Terrace.....	500	Bayou.....	200	Gavotte.....	300	Seaquest.....	200
Shuffle.....	300	Tetrus.....	200	Beckett.....	400	Gillian.....	300	Seaquest RL 'N PLT.....	300
Sidestep.....	300	Token.....	300	Benjamin.....	300	Glissando.....	300	Seduction.....	300
Siesta.....	300	Tom's Garden.....	300	Bergeret.....	400	Gouache.....	200	Sequins.....	300
Silk Road.....	400	Touchstone.....	200	Berwick Tweed.....	300	Grand Sierra.....	300	Shagreen.....	300
Simba.....	300	Trail.....	400	Bomber.....	400	Hackney.....	200	Silvertex.....	300
Siren.....	400	Trapeze.....	300	Bongo.....	300	Hemingway.....	400	Solino.....	300
Skittle.....	300	Trapezoid.....	300	Bottega.....	200	Heritage.....	200	Solitaire.....	300
Slalom.....	300	Tree House.....	400	Bourbon Street.....	200	Hitch.....	300	Spark.....	300
Slide.....	200	Trendsetter.....	300	Brink.....	300	Huxley.....	400	Spirit Millennium.....	300
Soffit.....	300	Tributary.....	300	Brisa.....	600	Hyde.....	200	Spirit Supreme.....	300
Soiree.....	400	Trifle.....	300	Brisa Distressed.....	700	Impression.....	300	Spotlight.....	400
Solenoid.....	300	Trinket.....	300	Burkshire.....	300	Imprint.....	300	Stable.....	300
Sophie.....	300	Triumph.....	300	Caesar.....	300	Inclination.....	300	Sta-Soft.....	200
Sorti.....	300	Trotter.....	300	Caliber.....	200	Independence 2.....	200	Steel Pier.....	300
Soul.....	300	TV Land.....	300	Canyon.....	200	Interlace.....	300	Steps.....	300

FABRIC PROGRAM

Fabrics listed may have been discontinued or price changed since publishing.

DOUGLASS, CONTINUED

Stipple.....	200
Strada.....	500
Stratosphere.....	300
Surface.....	300
Surfside.....	300
Surge.....	300
Surrey.....	300
Symphony.....	200
Symphony Classic.....	200
Symphony Glaze.....	300
Symphony Lumina.....	400
Symphony Ultra.....	400
Symphony Vintage.....	300
Synchronicity.....	300
Taffy.....	200
Tokio.....	300
Tolstoy.....	400
Tram.....	300
Traveler.....	300
Treasure.....	300
Trexx.....	200
Twain.....	400
Twilight.....	300
Twist.....	300
Ultraleather.....	600
Ultraleather Pro.....	700
Universal.....	200
Valinda.....	300
Vdara.....	300
Vermillion.....	300
Vermont.....	300
Verve.....	300
Vibe.....	200
Vibrato.....	300
Vicinity.....	300
Vitality.....	300
Vivace.....	300
Volley.....	300
Whisper.....	200
Wish.....	300
Wonder.....	300
Woven Hues.....	300
Wynn.....	300
Zodiac.....	300

MAHARAM

A Brand Apart.....Call	Chalet.....600	Emit.....500	Layers Vineyard.....Call	Paver.....600
Abacus.....600	Chasm.....600	Enmesh.....500	Lean.....500	Pebble Wool.....Call
Abacus Standard.....500	Chassis.....600	Entwine.....Call	Ledger.....500	Pebble Wood Multi.....Call
Across.....600	Checker.....Call	Epingle Stripe.....Call	Lens.....500	Pennant.....600
Agency.....Call	Checker Split.....Call	Equate.....600	Letters.....Call	Pepper.....500
Akimbo.....600	Chenille Cord.....Call	Etch.....Call	Lift.....700	Pick.....400
Albemarie.....Call	Chime.....500	Exaggerated Plaid.....Call	Limn.....Call	Pick Crypton.....600
Alloy.....500	Chock.....600	Exchange.....500	Lineage.....500	Pinnacle.....600
Alpaca Epingle.....Call	Chroma.....Call	Facets.....Call	Link.....700	Pitch.....500
Alpaca Velvet.....Call	Circles.....Call	Fasten.....700	Lithe.....600	Plait.....500
Alter.....500	Circuit.....600	Fathom.....500	Loop.....500	Plume.....Call
Amulet.....Call	Clamber.....600	Feature.....600	Lunar.....400	Pocket.....600
Anagram.....700	Clara.....600	Festoon.....600	Manner.....400	Point.....Call
Angles.....Call	Coach Cloth.....Call	Floret.....600	Mantle.....400	Pressed Linen.....Call
Apex.....600	Coast.....500	Fluent Crypton.....600	Marquee.....400	Pressed Plaid.....Call
Apt.....700	Coda.....Call	Flurry.....Call	Massive Paisley.....Call	Prime.....600
Arabesque.....Call	Coin.....500	Fluted Silk.....Call	Mechanism.....Call	Prompt.....500
Arcade.....Call	Coin Crypton.....600	Flutter.....Call	Medium.....400	Quatrefoil.....Call
Aria.....Call	Coincide.....400	Fold.....600	Mela.....Call	Quay.....600
Article.....400	Coincide HP.....600	Foliage.....Call	Melange Tweed.....Call	Quell.....Call
Assembled Check.....Call	Colline.....600	Fore.....Call	Meld.....400	Queue.....500
Balustrade.....700	Colorfield.....Call	Forest Nap.....500	Memory.....700	Quick.....500
Bander.....Call	Colorwheel.....Call	Frequency.....500	Meridian.....600	Raas.....600
Bar.....500	Column.....600	Fruit.....Call	Merit.....400	Rail.....600
Bar Crypton.....600	Compartment.....Call	Furrow.....600	Mesh.....Call	Re-Wool.....400
Basel.....600	Compound.....600	Galaxy.....600	Messenger.....400	Recheck.....600
Bavaria.....Call	Conduit.....400	Gallant.....500	Metric.....400	Reef.....Call
Bavaria Stripe.....Call	Confetti.....Call	Garden.....Call	Micro.....500	Reel.....Call
Beacon.....700	Cosset.....600	Geometri.....Call	Mikado.....Call	Regatta.....700
Beam.....700	Cotton Velvet.....Call	Gild.....600	Milestone.....400	Relay.....Call
Beryl.....600	Couple.....600	Glaze.....Call	Millerstripe.....Call	Remix.....600
Beside.....600	Cove.....Call	Glow.....500	Mimic.....700	Repeat Classic.....Call
Bespoke Stripe.....Call	Crew.....600	Grade.....700	Mineral.....600	Repeat Classic Print.....Call
Bevel.....500	Croft.....Call	Grid.....Call	Mingled Plaid.....Call	Repeat Classic Stripe.....Call
Big Stripe.....Call	Crosspatch.....Call	Grove.....600	Minicheck.....Call	Repeat Dot.....Call
Bind.....Call	Crush.....600	Gust.....500	Mister.....700	Repeat Dot Print.....Call
Bitmap.....500	Cursive.....700	Hallingdal.....700	Mode.....400	Repeat Dot Ring.....Call
Blended Stripe.....Call	Cycle.....500	Hedge.....600	Mohair Extreme.....Call	Rill.....500
Blip.....700	Dapper.....500	Hero.....600	Mohair Supreme.....Call	Ring.....600
Blocks.....Call	Daring Sampler.....Call	Herringbone Stripe.....Call	Molly.....600	Roam.....Call
Bluff.....600	Daring Larger.....Call	Hewn.....Call	Monk's Wool.....Call	Roster.....400
Blumen.....Call	Daring Plaid.....Call	Horsehair Basket.....Call	Monsoon.....Call	Rove.....500
Borders.....Call	Dart.....600	Horsehair Check.....Call	Motley.....500	Rule.....700
Boundary.....500	Deconstructed Rose.....Call	Horsehair Striae.....Call	Multiply.....500	Runner.....600
Bright Angle.....Call	Design 9297.....Call	Houndstooth.....Call	Murmur.....400	Runner Standard.....500
Bright Cube.....Call	Dingbats.....Call	Hours.....Call	Muse.....300	Salon.....Call
Bright Grid.....Call	Disc.....500	Huddle.....Call	Names.....Call	Scape.....700
Brim.....700	Ditto.....700	Idle.....Call	Nestle.....Call	Schema.....600
Brintle.....500	Divide.....500	Imbue.....Call	Nimble.....600	Scuba.....500
Brio.....600	Divide Crypton.....600	Industry.....Call	Oblique.....400	Scute.....500
Brushed Camel.....Call	Divina.....700	Inlay.....Call	Octave.....700	Scuttle.....500
Brushed Cashmere.....Call	Divina MD.....700	Insignia.....700	Offeset.....Call	Segmented Stripe.....Call
Brushed Merino.....Call	Divina Melange.....700	Instill.....500	Optik.....Call	Sequence.....600
Buffer.....600	Dot Pattern.....Call	Jacobs Coat.....Call	Orakelblume.....Call	Sequential Stripe.....Call
Bureau.....400	Dots.....Call	Joist.....Call	Orbit.....500	Serif.....700
Bushel.....600	Double Triangles.....Call	Keen.....500	Ottoman Stripe.....Call	Serried.....700
Candid.....500	Drape.....600	Kindred.....600	Overlapping Stripe.....Call	Shadow.....600
Candor.....500	Dwell.....400	Knob.....Call	Painted Stripe.....Call	Sheen.....600
Canvas.....600	Eden.....Call	Knot.....Call	Palio.....Call	Shuttle Standard.....500
Caper.....400	Edges.....Call	Lanalux.....Call	Parched Silk.....Call	Sift.....Call
Carapace.....Call	Ellipsis.....600	Lariat.....500	Pare.....600	Signal.....600
Cartouche.....600	Embed.....600	Layers Garden.....Call	Parquet.....700	Silk Canvas.....Call
Cashmere Ripple.....Call	Emboss.....600	Layers Park.....Call	Passel.....Call	Skein.....500

FABRIC PROGRAM

Fabrics listed may have been discontinued or price changed since publishing.

MAHARAM, CONTINUED

Slant.....	600	Waterborn.....	Call
Slumber.....	Call	Waver.....	600
Small Dot Pattern.....	Call	Wend.....	500
Soft Tweed.....	Call	Wool Check.....	Call
Songbird.....	Call	Wool Rib.....	Call
Sort.....	500	Wool Striae.....	Call
Span.....	600	Wool Velvet.....	Call
Spare.....	Call	Wrap.....	500
Splay.....	500		
Spry.....	500		
Stack.....	500		
Stature.....	500		
Steady.....	500		
Steady Crypton.....	600		
Steelcut.....	600		
Steelcut Trio.....	700		
Stick Tree.....	700		
Strips.....	Call		
Strum.....	600		
Study.....	Call		
Sudden.....	600		
Sundry.....	Call		
Superweave.....	Call		
Surge.....	600		
Swathe.....	Call		
Switch.....	600		
Swivel.....	600		
Tandem.....	500		
Tangram.....	Call		
Taper.....	Call		
Teatro.....	Call		
Technic.....	400		
Telary.....	Call		
Tempera.....	600		
Tend.....	600		
The Firm.....	Call		
The Story of My Life.....	Call		
Ticker.....	600		
Tilt.....	600		
Tonica.....	600		
Tonus.....	600		
Toostripe.....	Call		
Tracery.....	Call		
Trait.....	600		
Transport.....	Call		
Tread.....	600		
Trees.....	Call		
Trellis.....	700		
Tress.....	Call		
Trio.....	Call		
Trundle.....	400		
Twice.....	500		
Twill Weave.....	700		
Unisol.....	Call		
Urban.....	600		
Valor.....	Call		
Vases.....	Call		
Veer.....	500		
Velvet Stripe.....	Call		
Venn.....	600		
Vestige.....	600		
Vineyard.....	Call		
Voyage.....	Call		

LEATHER

Balm.....	Call
Bask.....	Call
Brush.....	Call
Draft.....	Call
Hue.....	Call
Loam.....	Call
Pace.....	Call
Press.....	Call
Seal.....	Call
Stark.....	Call
Source.....	Call
Stark.....	Call
Steep.....	Call
Stow.....	Call
Tinge.....	Call
Tuft.....	Call

MAYER

Abbey.....	300	Duraweave 10.....	200	Kobe.....	300	Puno.....	500	Viewpoint.....	500
Abstract.....	500	Echo.....	400	Labyrinth.....	500	Quattro.....	200	Villa.....	500
Acclaim.....	400	Ecospere.....	400	Landscape.....	500	Rain Dance.....	300	Vintage Mohair.....	Call
Acuco.....	600	Element.....	200	Laredo.....	300	Ranchero.....	200	Vinyl Stat ESD.....	400
Align.....	300	Elevation.....	400	Laser.....	200	Reflector.....	600	Vipassana.....	600
All Seasons FR.....	200	Engrave.....	200	Latitude.....	400	Refuge.....	500	Vogue.....	300
Amadeus.....	500	Entourage.....	500	Lavish.....	400	Rejuvenate.....	600	Volante.....	Call
Ankara.....	400	Entwine.....	300	Links.....	300	Relativity.....	600	Wallaby SP Black.....	200
Antique**.....	300	Ephesus.....	500	Locomotion.....	200	Replay.....	500	Whimsy.....	600
Apex.....	300	Equation.....	300	London.....	400	Reveal.....	400	Whirligig.....	600
Apollo Silicone.....	600	Esprit.....	300	Longhorn.....	400	Reverb.....	300	Wildflower.....	600
Arabesque.....	300	Essence.....	400	Longitude.....	400	Rift.....	400	Wilson.....	500
Aristocrat.....	300	Etch.....	200	Lotus.....	600	Round 'N Round.....	500	Wool Boucle.....	700
Array.....	300	Europa.....	300	Madras.....	300	Rumba.....	200	Wool Felt.....	300
Ascension.....	500	Evolve.....	600	Madrid SP Black.....	200	Sakura.....	600	Wool Heather.....	400
Atomic.....	300	Facets.....	500	Malibu.....	400	Samba.....	200	Xanadu.....	500
Aurora.....	600	Fairy Tales.....	500	Mandala.....	700	Samurai.....	600	Zazen.....	500
Avenue.....	500	Fanfare.....	600	Marmara.....	400	Saori.....	600	Zen.....	500
Balance.....	500	Fedora.....	300	Matka.....	300	Score.....	400		
Bali.....	300	Fiji.....	200	Matrix.....	600	Sequel.....	200		
Batik.....	300	Finale.....	400	Matter.....	400	Sequel plus			
Berkshire.....	400	Finesse.....	300	Maverick.....	200	NaoGuard.....	300	** These patterns are	designed to simulate
Big Top.....	500	Florentino.....	200	Mayfair.....	400	Sequence.....	300	natural leather that	features shade variations
Bolero.....	400	Flower Power.....	300	Meander.....	300	Shantung.....	300	and 'beauty marks'	formed from wrinkles,
Boro.....	600	Form.....	400	Metal Strips.....	500	Sherlock.....	300	stretch marks and	usage. These effects are
Botanica.....	400	Forte.....	200	Microdot.....	300	Shibori.....	600	purposefully intended	to mimic those of real leather
Botany.....	500	Foundation 10.....	200	Milagro.....	600	Shimmer.....	400	and are not defects in the	product.
Bothé.....	700	Fretwork.....	600	Milano.....	300	Sierra SP Black.....	200		
Caressa FR.....	300	Function.....	300	Mingle.....	300	Signs.....	600		
Cascade.....	400	Gala.....	300	Mode.....	400	Silk Screen.....	300		
Catwalk.....	300	Galveston.....	300	Molecule.....	600	Silverweave.....	300		
Celtic.....	300	Geisha.....	700	Monogram.....	300	Slick.....	300		
Chaps FR.....	300	Gem.....	200	Moonscape.....	300	Social Network.....	400		
Charette.....	300	Genesis.....	300	Mosaic.....	300	Soho.....	400		
Chequers.....	400	Genesis plus		Mosaic plus		Soleil.....	500		
Circuit.....	600	NanoGuard.....	300	NaoGuard.....	300	Sophisticate.....	300		
Circumference.....	600	Gravity.....	500	Neo.....	300	Source.....	300		
Cirque.....	300	Groundworks.....	400	Niche.....	400	Source plus			
Collage.....	600	Haarlem.....	600	Nirvana.....	500	NaoGuard.....	400		
Comalapa.....	600	Haberdash.....	300	Noble.....	300	Spacer Mesh.....	300		
Contempo.....	300	Habitat.....	300	Nostalgja.....	400	Splendor.....	400		
Continuum 10.....	200	Havana.....	200	Nylon-Stat ESD.....	500	Spokes.....	500		
Cosmopolitan.....	300	Hexagon.....	300	Obi.....	600	Static.....	600		
Counterpoint.....	400	Holiday.....	400	Obsession.....	600	Stellar.....	200		
Crazy Quilt.....	600	Hombre.....	400	Odessa.....	400	Sula.....	600		
Cross Check.....	200	Hoopla.....	200	Optic 10.....	300	Suna.....	600		
Cube.....	200	Huipil.....	500	Orbit.....	300	Sutra.....	500		
Cuddle Up.....	500	Images.....	300	Origami.....	600	Sydney.....	200		
Curlicue.....	300	Imprint.....	200	Outback.....	300	Synapse.....	600		
Dakota.....	300	Infinity.....	500	Oxen SP Black.....	200	Tango.....	300		
Dande.....	300	Interlace.....	300	Palermo.....	400	Tattersall.....	400		
Darning.....	600	Interlochen.....	300	Paparazzi.....	500	Textura.....	600		
Daydream.....	300	Intrigue.....	300	Parallel.....	300	Theory 10.....	300		
Dazzle.....	400	Jekyll & Hyde**.....	300	Pastime.....	400	Time Line.....	400		
Debonair.....	500	Jitterbug.....	300	Patio.....	300	Turnabout.....	500		
Debut.....	600	Jive.....	200	Peerless.....	300	Tussah.....	300		
Destiny.....	300	Journey.....	300	Phoenix.....	300	Valet.....	300		
Destiny Plus		Jubilee.....	300	Plaza.....	400	Variant 10.....	300		
NanoGuard.....	300	Kantha.....	600	Polygon.....	300	Vector.....	600		
Detail.....	500	Karma.....	400	Positive Thoughts.....	600	Venetian.....	Call		
Disco.....	300	Katagami.....	600	Primo.....	400	Venue.....	300		
Dublin Tweed FR.....	300	Kensington.....	300	Prism 10.....	300	Verona.....	300		
Durango.....	300	Key Largo.....	200	Proportion.....	500	Vibrant.....	400		

LEATHER
 Cheyenne..... Call
 Laramie..... Call

FABRIC PROGRAM

Fabrics listed may have been discontinued or price changed since publishing.

MOMENTUM

3d Grid.....700	Glide.....500	Propensity II.....300	Faux Felt.....400	Silica Fresco.....700
Ace.....300	Graph.....300	Prospect.....400	Faux Mo.....500	Silica Fritz.....700
Aldo.....700	Grid.....300	Proximity.....600	Flock.....400	Silica Gadget.....700
Allegory.....600	Guideline.....600	Pursue.....600	Gatsby.....600	Silica Hiatus.....700
Amenity II.....600	Guild.....300	Quince.....600	Hobnob.....400	Silica Hoop.....700
Amuse.....400	Habit.....300	Raft.....600	Infusion.....500	Silica Jig.....700
April.....500	Hearsay.....600	Reveal.....600	Kayak.....700	Silica Kip.....700
Audubon.....600	Highline.....600	Revolve.....700	Keynote.....400	Silica Leather.....700
Bandwidth II.....500	Hitch.....400	Riga.....600	Kit.....400	Silica Likely.....700
Bangle.....200	Hop.....500	Ring.....600	Oath.....500	Silica Motive.....700
Banter.....600	Hue.....300	Rise.....300	Phase.....600	Silica Reach.....700
Beep.....300	Infinity C-Zero.....300	Rivet.....300	Reverb.....600	Silica Roam.....700
Beta.....400	Insight.....200	Rubato.....600	Roster.....600	Silica Scout.....700
Bobby.....300	Interim.....600	Rush Hour.....600	Solitaire.....400	Silica Spoke.....700
Boom II.....400	Interlock.....700	Sail.....600	Sport.....400	Silica Strata.....700
Borders.....600	Intermix II.....400	Scrabble.....300	Synergy.....500	Silica Stride.....700
Boxcar.....600	Iota.....600	Siteline.....700	Tag.....600	Silica Tech.....700
Brink.....600	Jitney.....500	Sketching Air.....700	Trefoil.....500	Silica Thatch.....700
Brisk.....600	Jot.....300	Skip.....300	Viva II.....500	Silica Today.....700
Build.....400	Journal.....600	Slice.....300	Waver.....400	Silica Triad.....700
Buoy.....600	Kindle.....500	Small Talk.....600		Silica Waltz.....700
Cairns.....700	Kinney.....300	Solace.....300	VINYL	Silica Wifi.....700
Camber.....600	Knack.....300	Spontaneous.....700	Acoustic.....600	Sublime II.....400
Carlo.....700	Lateral.....500	Starboard.....600	Agora II.....400	Tact II.....600
Centric.....600	Ledge.....400	Story.....600	Archer.....600	Tanner.....300
Chipper.....600	Lella.....600	Stroll.....300	Beeline.....300	Tetra.....300
Chromatic.....600	Lens.....300	Strum.....600	Bravo II.....400	Velocity.....400
Cityscape.....700	Level.....500	Strut.....400	Canter.....300	Vertu.....400
Civil.....600	Lina.....700	Sunny.....500	Cashmere II.....300	Whit.....400
Clang.....300	Lineup.....300	Syntax.....300	Chime Epu.....400	Zipped.....600
Climb.....600	Lloyd.....700	Tack.....400	Club Epu.....400	
Collect.....400	Lore.....600	Tactic.....600	Cycle.....400	
Colorwheel.....500	Lucio.....Call	Tech Weave.....Call	Echo II.....600	
Croquet.....600	Ludwig.....700	Tesla.....600	Endurance Epu.....300	
Crossing Colors.....700	Mapping Ideas.....700	Tilt.....500	Eon.....300	
Cube.....600	Marathon C-Zero.....300	Toggle.....300	Foray.....400	
Culture.....500	Marcel.....700	Traction.....600	Fringe.....400	
Current.....300	Memory.....700	Tradition C-Zero.....300	Groove.....400	
Cutout.....Call	Millennium C-Zero.....300	Trapeze.....600	Halo.....600	
Dart.....300	Nagoya.....600	Trivia.....600	Hark Epu.....400	
Dash.....600	Nimble.....600	Turin.....600	Hive.....500	
Dayspell.....600	Odyssey C-Zero.....300	Uplift.....500	Icon.....500	
Decode.....300	Ohs II.....700	Veer.....500	Kindred.....500	
Delve.....500	Origin.....200	Via.....300	Leno.....600	
Dive.....500	Otto.....300	Vox.....200	Mogul Epu.....400	
Drawing Lines.....600	Painting Strokes.....600	Wander.....600	Nifty.....300	
Drift.....600	Panorama.....600	Weaving.....600	Rein II.....400	
Ebb.....600	Pantheon.....600	Well Well Well.....Call	Row.....400	
Edison.....600	Parable.....600	Whim.....600	Sidestep.....600	
Embark.....500	Parenthesis.....300	Why Why Why.....700	Silica.....700	
Epic.....300	Pax.....600		Silica Andy.....700	
Essay.....600	Perk.....200	CRYPTON	Silica Arc.....700	
Explore.....600	Photon.....600	Almanac.....600	Silica Bracket.....700	
Expo.....200	Phrase.....600	Analog.....600	Silica Checker.....700	
Fleet.....500	Pierre.....700	Ascend.....400	Silica Chopsticks.....700	
Float.....300	Ping.....300	Byways.....600	Silica Compass.....700	
Flow.....600	Pip.....400	Central.....400	Silica Cusp.....700	
Flux.....600	Pique.....300	Channel.....400	Silica Deflect.....700	
Focal.....300	Places Spaces.....700	Cover Cloth.....400	Silica Effloresce.....700	
Fold.....700	Plan.....500	Docket.....700	Silica Etc.....700	
Free.....300	Platform.....500	Domain.....400	Silica Etch.....700	
Fuse.....200	Point.....300	Etude.....700	Silica Fiona.....700	
Geo.....700	Propel.....600	Evolve.....600	Silica Flick.....700	